

# Section 2

Barnett .....	2-4,6,8
Clutch Cables .....	12-17
Clutch Hubs .....	10-11, 43-47
Clutch Parts .....	2-11
Alto .....	5
BDL .....	6-7
Barnett .....	2-6
Rivera .....	8
York .....	8
Delkron .....	48
5 Speed Clutch BT .....	43-47
5 Speed Trans Parts BT ....	33-36, 55-57
6 Speed BT.....	58-59
Kicker/Covers, BT 5 Speed .....	52-54
Pulleys .....	30-32
Rotary Top .....	21
Shifter BT .....	21-30, 38-40
Shift Kits .....	22
Shift Levers .....	22-30
Sprocket Covers, XL .....	60
S&S Transmission/Casing .....	49
XL Clutch .....	10-11
XL Shifter Parts .....	62-64
XL Trans .....	61-64

# Clutch



## Barnett Stock Replacement Drive Plates-Each

• Fits BT and XL with diaphragm clutch

PCP	Application	Thickness	Requires
38907	BT 84-89	.047"	7
38961	BT 90-97, XL 91-on	0.63"	6*
38983	BT 98-99, TC 99-17 (except 13-16 CVO/SE, FLHTC L)	0.63"	8
38908	XL 86-90	0.63"	6

\*Must re-use OEM double riveted steel plate



## Barnett CF 2000 Segmented Friction Plate Kits

- Segmented carbon fiber plates run 25% cooler
- 20% increase in torque load for greater efficiency
- Compatible with stock steel plates, springs and all oils

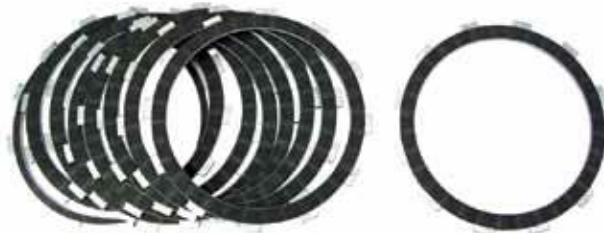
Friction Plate Kits			
PCP	Application	Contents	OEM
38932	XL 86-90	7 plates	36788-84
38935	BT 84-89	6 plates	37930-84
38933	BT 90-97, XL 91-on	8 plates	
38937	BT 98-99, TC 99-17 (except 13-16 CVO/SE, FLHTC L)	9 plates	



## Barnett Clutch Plate Kits

- Includes friction and steel plates, as required.
- EP-Extra plate kits include 1 additional friction plate

PCP	Application	Type	Contents
38979	XL 86-90	EP-Kevlar	8 friction, 7 steel
38978	BT 90-97, XL 91-on	EP-Kevlar	9 friction, 8 steel
38934	BT 90-97, XL 91-on	EP-CF2000	9 friction, 8 steel
38988	BT 98-99, TC 99-17 (except 13-16 CVO/SE, FLHTC L)	EP-Kevlar	10 friction, 9 steel
38989	BT 98-99, TC 99-17 (except 13-16 CVO/SE, FLHTC L)	Carbon Fiber	9 friction, 8 steel
38990	BT 98-99, TC 99-17 (except 13-16 CVO/SE, FLHTC L)	EP-Carbon Fiber	10 friction, 9 steel



## Barnett Kevlar Friction Plate Kits

- Ultimate in durability, smoothness & strength
- Alloy backed plates for smooth, precise launches & shifting
- Performs in extreme heat & is 100% asbestos free

Friction Plate Kits			
PCP	Application	Contents	OEM
38972	XL 86-90	7 plates	36788-84
38976	BT 84-89	6 plates	
38977	BT 90-97, XL 91-on	8 plates	37910/11-90
38982	BT 98-99, TC 99-17 (except 13-16 CVO/SE, FLHTC L)	9 plates	



## Barnett V-Rod 2002-07 Kevlar Clutch Plate Kit

- 38969 Clutch kit
- 38970 Extra plate kit



## Barnett Scorpion BT Clutch Basket

- Bolt-on billet aluminum, hard anodized clutch basket
- Remove ring gear/primary gear from your old basket & bolt on the Scorpion basket with included hardware
- Fits 2007-15 BT and 2006-15 Dyna

38991



## Barnett Scorpion Clutch Drive

Greatly increases clutch capacity. Provides smoother shifting and multiple spring pressure options. Ideal for stock to highly modified applications. Includes steel hub, billet pressure plate, clutch plates and multiple spring sets. Designed to be used with stock type clutch basket.

### Big Twin (except 06 Dyna)

#### PCP Application

**38944** 1986-89

**38945** 1990-97



### Sportster

**38941** 1984-90 4 speed Evo

**38942** 1991-on 5 speed Evo



## Barnett Scorpion Lock-Up Pressure Plate

For use on existing Scorpion clutches. Must be used with open primary or Scorpion primary cover.

**38951** 1998-06 BT models



## Barnett Scorpion Clutch Assemblies

Increases clutch surface area by 100%. Features six coil springs, steel inner hub, and billet aluminum pressure plate. Extra spring sets are included for multiple spring pressure options. Designed to fit into OEM type clutch basket.

### PCP Description

**38946** 1998-06 BT (except 2006 Dyna)

**38949** 1999-06 BT (except 2006 Dyna) w/HD hydraulic clutch

**38948** 2007-10 BT and 2006-10 Dyna

**38939** 2007-10 BT and 2006-10 Dyna with hydraulic clutch

**38968** 2011-17 BT except 13-16 CVO/SE, FLHTC L

**38975** 2011-17 BT with hydraulic clutch except 13-16 CVO/SE, FLHTC L



## Barnett Scorpion Under Cover Lock-Up Clutch

Features a billet aluminum pressure plate with six adjustable pressure arms that increase clutch pressure as RPMs increase. Suitable for High HP motors. **Must be used with open primary or Scorpion primary cover.**

**38957** 2007-10 BT & 2006-\* Dyna



## Scorpion Replacement Clutch Plate Kits

Kit consists of friction plates and steel plates

### PCP Description

**38962** Dry BT 1998-17, except 13-16 CVO/SE, FLHTC L

**38963** Wet BT 1998-17, except 13-16 CVO/SE, FLHTC L

**38901** Wet BT 1986-89

**38902** Wet BT 1990-97

**38903** Wet XL 1986-90

**38904** Wet XL 1991-on

# Clutch



## Barnett Heavy-Duty Clutch Spring

Heavy-duty replacement clutch spring for Big Twins 1984-on and Sportsters 1985-on. 20% stronger than stock and suitable for street applications.

- 38917** 1984-90 Big Twin (37902-84A)
- 38920** 1984-90 Sportster (36792-84)
- 38919** 1991-97 Big Twin & 1991-03 Sportster heavy duty
- 38921** As above, standard duty (37871-90)
- 38984** 1998-99 BT, 1999-15 TC standard (37871-98)
- 38985** As above heavy-duty
- 38866** Alto standard 1998-15 BT and TC (37871-98)
- 38900** Billet aluminum pressure plate 1990-97 BT



## S&S High Performance Clutch 1991-06

Clutch includes 10 steel plates and 11 friction plates with narrow bands of friction material. These narrower bands offer improved gripping power and an increased friction diameter centreline. With the centreline farther away from the centre of the clutch, more leverage to turn the transmission is produced. The S&S clutch is able to handle 150 horsepower with clutch lever effort that is slightly less than a stock clutch. A stronger pressure plate spring is available for competition type applications that will increase the power handling ability to almost 200 horsepower. An early style 66T ring gear is supplied because the stronger teeth are better able to stand up to the forces required for big inch engines. An early style starter pinion gear is required for all 1994-05 models. The S&S performance clutch is slightly larger than stock and can be used in stock primary cases with minor clearancing, which is not visible when the primary is assembled. Suitable for use with S&S 6 speed transmissions.

- | <b>PCP</b>    | <b>Application</b>                              |
|---------------|---|
| <b>565150</b> | Clutch with 36T chain sprocket (not 06 Dyna)    |
| <b>565106</b> | High pressure competition clutch springs (6 pk) |
| <b>565109</b> | Low pressure Touring clutch springs             |



## Barnett Clutch Spring Conversion

Billet pressure plates eliminate diaphragm spring and allows use of coiled spring for more tuneability and more positive linear clutch action.

- 38986** Twin Cam 1998-12



## Barnett Clutch Spring Adjuster Plate

Steel plate provides three different spring height adjustments.

- 38922** BT mid 1984-90

# Clutch



## Alto Clutch Kits

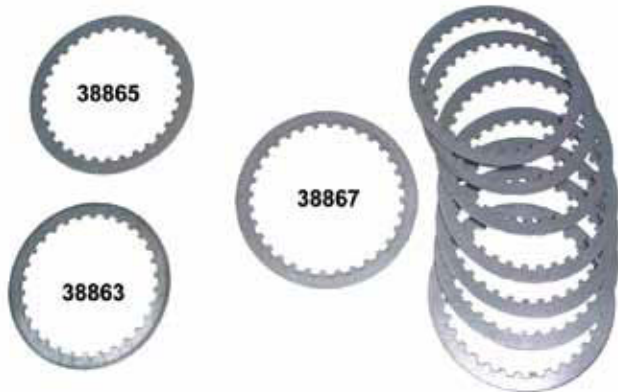
Alto clutch products are manufactured in the USA of friction grabbing clutch material. These kits have two sided fibre plates, bonded on steel. Sold in sets.

PCP	Year	Model
38872	1991-16	Sportster (8)
38875	1985-89	Big Twin (6)
38872	1990-97	Big Twin (8)
38876	1998-16	Big Twin (9) Red Eagle
38877	1998-16	Big Twin (9) Kevlar

## Alto Carbonite Power Pack Clutch Kits

BT clutch kits include carbon friction plates and steel drive plates. The 3M carbon based friction plates perform under high friction and high temperature conditions. Steel drive plates are melonite treated for better engagement and cooler running. Order spring plate separately.

PCP	Application
38878	1984-89
38879	1990-97, FXR 90-94, XL 91-16
38880	1998-16



## Auto Slip Clutch

Fits all BDL and York 3" belt drive units.  
21780

## Alto Steel Drive Plates

Steel drive plates by Alto Products Corp. are made in the USA for models listed. (Sold each).

PCP	Year	Model	# Required
38861	1984-89	Big Twin	(7)
38863	1990-97	Big Twin	(6)
38865	1998-16	Big Twin (37913-98)	(8)
38867	1998-16	BT 8 piece kit	

## Diaphragm Clutch Spring

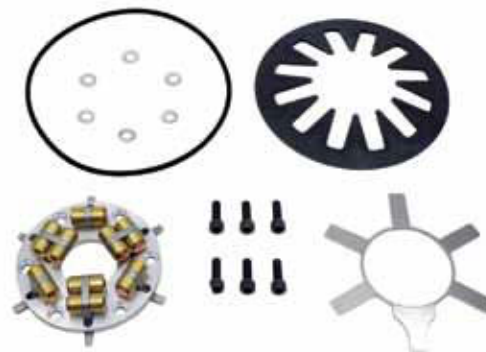
- Yellow spring for FLT 2004-on
  - Replaces 37871-04
- 38802



## Easy Clutch Kit for Twin Cam

This kit features a clutch spring and inner/outer ramps that significantly reduce the effort required to use the clutch lever. Fits 1998-05 Twin Cam models (stock on 2006-on) but is not compatible with screamin eagle performance parts.

59916



## Variable Spring Clutch Combo

- Variable spring clutch and spring kit for up to 103" engines
  - Offers stronger clutch engagement as revs increase
  - Fits 1998-on FLT, FLST, FXD, FXST
- 36186

# Clutch



76478

## BDL Clutch Kits for Stock

BDL Clutch kits feature kevlar friction plates, steel plates and high pro diaphragm springs when required.

PCP	Fits	# of Plates Included		
		Kevlar	Steel	Spring
76461	BT 1984-89	6	7	None
76462*	BT 1990-97	8	6	1
	XL 1991-16			
76463	BT 1990-97	9	8	1
	XL 1991-16			
76464	BT 1998-on	9	8	None
	TC 1999-on			
76478**	BT 1998-on	10	9	1 (extra plate kit)
	TC 1999-on			

\*Note: Must re-use stock double riveted steel plate.

\*\* Good for hot street or strokers

**BDL clutch kits** are made of either 6062 T6 or high tempered steel with Kevlar material. Each plate design was tested so maximum performance is achieved. Different groove patterns were designed for maximum oil circulation and heat dissipation. The steady flow of lubricant will cool and determine the longevity of your clutch. All BT kits are packaged with frictions and steels and a pre-measured stack height for easy installation.



## BDL Ultimate Clutch Kit

This high performance clutch lets you choose between a diaphragm or coil spring application. Kit will fit any BDL belt drive open or closed. Kit includes 2 diaphragm springs, spring collar, 12 springs and shoulder bolts.

**76505**



76175

## BDL Chain Drive with Ball Bearing Lock Up Clutch for 1998-06 Big Twin Models

Ball bearing clutch basket features a pressure plate that uses 5/16" steel ball bearings, diaphragm, retainer and adjusting screw. For larger engines it may be necessary to use carbide balls.

PCP	Description
76175	Complete clutch basket (less chain) (CDB-2-90)
76176	Clutch basket and chain kit includes complete clutch basket, adjuster shoe with bracket, Diamond primary chain and 25T front sprocket (CDB-1-90)
76177	Clutch basket and compensator kit includes complete clutch basket, adjuster shoe with bracket, Diamond primary chain, 25T front sprocket and BDL compensator (CDBCS-1-90)

Reverse side of 76175



26062

26061

## Barnett Clutch Tool For Evo's

Diaphragm clutch spring compression tools make it easier to remove and re-install retainer ring.

**26061** 1990-99 BT and 1991-99 Sportsters

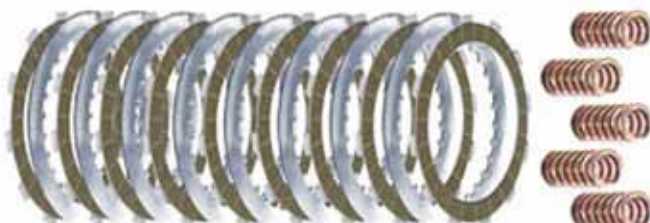
**26062** 1984-90 Sportsters



## BDL Lock-Up Clutch Kit

Designed to fit all EVO and EVB style belt drives. Centrifugal force allows the actuator arms to move outward, which applies extra pressure against the pressure plate and clutch springs for positive engagement with no clutch slippage.

**76419** (LUC-100)



## BDL V-Rod Replacement Clutch Kits

- Pre-measured stack for easy installation on 2002-08 V-Rod
- Aluminum core friction plates, tempered steel drive plates
- Includes zero collapse coil type clutch springs
- Stock replacement or high performance extra plate kits

PCP	Item	Friction	Drive	Springs
76498	Stock replacement kit	9	8	5
76499	HP Extra Plate kit	10	9	5



## BDL Competitor Clutch Kit

Kit includes 40mm double row hub bearing, polished pressure plate, Kevlar clutch and 9 springs and shoulder bolts for simple adjustment.

- PCP**    **Item**  
**76421**    BT w/chain primary drive 1990-97  
**76449**    7 fibre plates for #76421  
**76450**    8 steel plates for #76421



## BDL Ball Bearing Competitor Clutch

Fits Harley stock clutch baskets 1998 to 2006. Ball bearing lock-up pressure plate will handle large inch motors. 60% More clutch surface than stock, makes clutch slippage a thing of the past.

**76300**

#76300 Replacement Components					
A	76236	Pressure plate	G	76188	Clutch adjusting screw w/nut
B	76237	5/16" Ball bearings (42 pk)	H	76239	.120 Steel
C	76220	Diaphragm spring	J	76240	Kevlar fibers (7 pk)
D	76238	Clutch hub	K	76241	.059" Steels (6 pk)
E	76221	Spring retainer			
F	76242	3/8 x 7/8 Shoulder bolts (4)			

# Clutch



## York Posi-Lock Clutch Pressure Plate

Fits 98-06 BT and 98-05 FXD featuring positive engaging ball ramp activation.

**38009**



## York Hi Performance

Designed for better clutch operation and to deliver more torque & horsepower capacity. Made from the highest quality materials to ensure trouble free operation. Heavy-duty kevlar clutch plates deliver a smooth power transfer to the rear wheel. Adjustable coil springs allow you to tailor your clutch lever pressure and operation as needed. Very low maintenance kits are a great choice for upgrading.

**PCP Application**

**21820** 1998-06



## BT Clutch Pak Kit

Complete, heavy duty OEM style clutch kit includes bonded to steel clutch Kevlar friction plates and steel plates. 1985-97 types include friction plates, steel plates and diaphragm spring.

**PCP Type Application**

**38955** Wet Red Eagle type 85-89

**38956** Wet Red Eagle type 90-97, XL 91-16

**38958** Wet 1998-on



## Rivera Pro-Clutch

Converts old style clutch packs to smooth diaphragm spring function. Available for chain with wet or dry clutch. Kits include clutch hub with bearings, clutch discs (friction and steel), diaphragm spring, spring retainer, pressure plate and 4 shoulder bolts. 1984-on kits use existing clutch basket and include a hub which allows the use of clutch plates that increase surface area by 100% to reduce slipping.

**PCP Clutch Basket Type**

**76137** 84-89 Chain BT

**76138** 90-97 Chain BT

**76139** 98-06 Chain BT and 98-05 FXD

**76140** 06-10 Dyna and 07-10 BT

**76142** 11-16 FLT, FLST, FXD, FXST,

**76141** 1991-12 Chain XL

**Replacement Friction & Steel Sets**

**59611** 1984-89 Chain for #76137

**76084** 1990-97 Chain for #76138

**76085** 1998-on Chain for #76139

**76083** 1991-10 Chain for #76141



## Rivera-Primo Replacement Clutch Kits from Barnett

**PCP Fitment**

**38938** 1986-89 BT Evo Clutch

# Clutch Lever



## BT Hydraulic Clutch Handle Assembly

Includes chrome handle assembly with 11/16" bore, chrome trans side cover, rod and hydraulic line. For 1" bars.

**59553** Clutch handle assembly only

**59884** Cover only 99-on TC-88



## Foot Clutch Conversion Kit

Allows the use of Police rocker clutch on 1987-99 FXST, FLST where the clutch cable goes directly into the trans side cover.

Kit includes bracket and cable. May not be used with front engine bar. Custom application.

**PCP** Description

**59672** Kit (bracket and cable)

**59331** Cable only

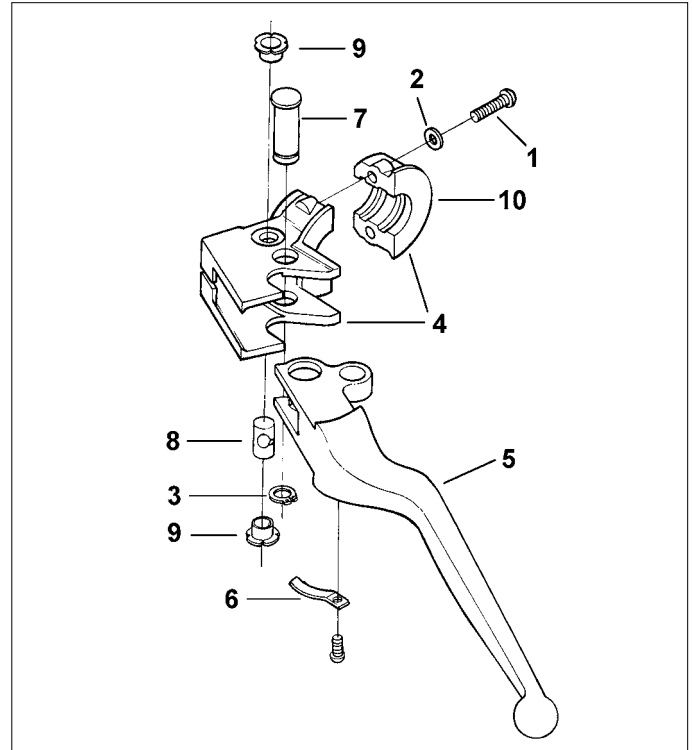
**16216** 1.25 Spacer block

**16245** 1.75 Spacer block



## XL Clutch Hand Lever Parts

PCP	Fit	Item	OEM	UM
<b>46051</b>	04-13	Chrome bracket and clamp	42808-04	Ea
<b>46052</b>	04-13	Chrome bracket	38671-04	Ea
<b>10121</b>	04-on	Pivot pin	42807-04	5 Pk
<b>13019</b>	04-on	Spring	45799-04	10 Pk



## 1982-95 Chrome Clutch Lever Components.

#	PCP	OEM	Description
1	<b>24509</b>	4015	Screw (5 pack)
2	<b>12003</b>	6099	Washer (10 pack)
3	<b>11035</b>	11143	Snap ring (10 pack)
4	<b>50206</b>	38608-82A 45044-82	Chrome bracket and clamp
		<b>50205</b>	As above with black finish
5	<b>2441</b>	45062-82	Clutch lever 1982-92
	<b>50204</b>	45017-93	Clutch and brake lever set 1993-95
6	<b>13003</b>	45021-86	Anti-rattle spring (5 pack)
7	<b>10159</b>	45032-82	Lever pin 1982-12 (each)
8	<b>10164</b>	45036-82	Cable pin 1982-87 (each)
	<b>10165</b>	45036-88	Nylon cable pin 1988-on (5 pack)
9	<b>13411</b>	45423-92	Bushing 1992-on (10 pk)
10	<b>46007</b>	45044-82	Black clamp
	<b>46005</b>	45044-82	Chrome clamp



## FXST Rocker Clutch Kit 1986-99

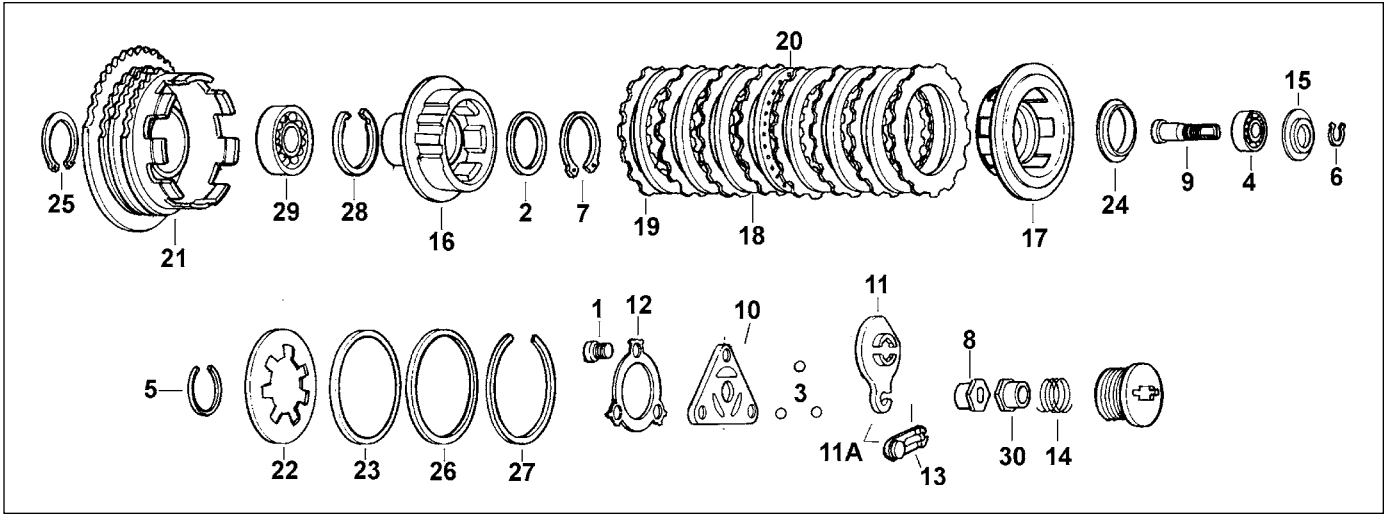
Includes rocker assembly, cable bracket and spacer block.

**PCP** Finish

**59514** Chrome

**21807** Black

# XL Clutch 1985-90



## XL Clutch Hardware 1985-90

#	PCP	OEM	Description	#	PCP	OEM	Description
1	24055	3583	Bolt (each) 1985-93	15	36141	36730-84	Bearing guide
2	11519	5707	Spacer (each)	16	65412	36785-84	Clutch hub
3	15574	8873	Check valve ball (10 pack)	17	65413	36786-84	Pressure plate
4	15704	8885	Bearing	18	38908	36787-84	Steel drive plate (each)
5	11082	37909-90	Guide retaining ring 1990-* (5 pk)	19	38972	36788-84	Friction plate (set of 7)
6	11023	11046	Adjusting screw snap ring (10 pk)	20	36142	36789-84	Riveted centre spring plate
7	11041	11164	Clutch hub retaining ring (10 pk)	21	37241	36791-84	Clutch hub shell with magnets
8	12528	11730A	Adjusting screw nut (each)	22	38920	36792-84	Pressure plate spring
9	24532	11735B	Adjusting screw 1985-93	23	36145	36793-84	Centre spring set
10	36139	25408-84	Inner ramp 1985-93	24	36143	36794-84	Inner spring seat
11	37103	25409-86A	Outer ramp L1986-93	25	11073	36795-84	Clutch hub retaining ring (5 pk)
12	13710	25448-84	Ramp lock plate 1986-93 (10 pk)	26	N/A	36796-84	Outer spring seat
13	37104	34920-86A	Cable coupling 1986-on	27	11074	36797-84	Press. plate retaining ring (each)
14	13184	36715-84	Adjusting spring 1984-93 (10 pk)	28	11075	36798-84	Clutch hub retaining ring (5 pk)
				29	15728	36799-84	Clutch bearing
				30	13742	36802-84B	Lock plate filler plug (5 pk)



## Alternator Rotor Clutch Shell Assembly

Features vibration proof magnet construction, as magnets are held in place by stainless steel non magnetic insert for durability. Replaces 36791-84. Fits 1984-90. Bearing and ring gear included.

**37241** Preston



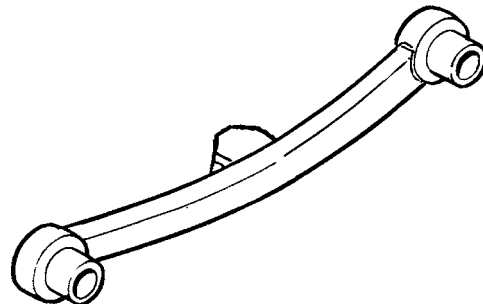
**65413** Pressure plate 36786-84



## Clutch Ramp Assembly Kits

Includes all necessary hardware for installation.

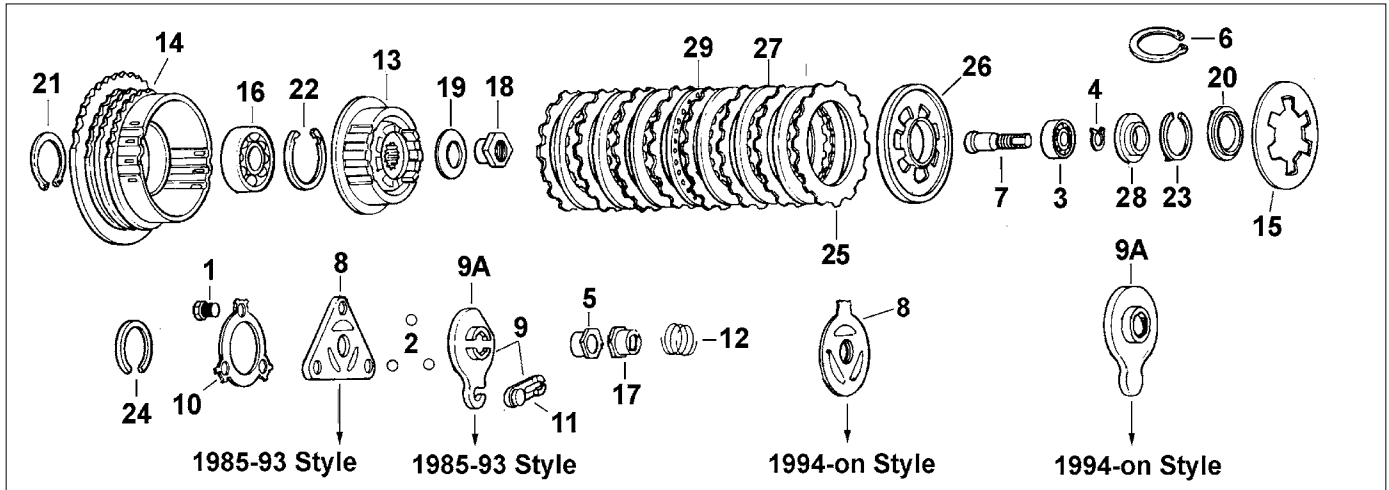
PCP	Year
<b>16609</b>	1994-on
<b>16608</b>	1991-93



## XL Shift Cam Follower 1986-90

Made from durable steel to replace OEM 34063-84.  
**36123**

# XL Clutch 1991-on



## XL Clutch Hardware 1991-on (not XR1200)

#	PCP	OEM	Description	#	PCP	OEM	Description
1	24055	3583	Bolt 1985-93	14	37240	36790-91	Clutch shell 1991-03
2	15574	8873	Check ball 1991-* (10 pack)	15	38919	37871-90	Diaphragm spring 1991-03
3	15704	8885	Bearing 1991-*	16	15738	36799-91	Ball bearing
4	11023	11046	Adj. screw ret. ring 91-* (10 pk)	17	13742	36802-84B	Well type lock plate (5 pk)
5	12528	11730A	Well nut 1991-*	18	12603	37495-91	Main shaft nut
6	11052	11250	Retaining ring 1994-on (10 pk)	19	20501	37870-91	Spring washer
7	24532	11735B	Adjusting screw 1991-93	20	62107	37872-90	Inner spring seat
	24533	11752	Adjusting screw 1994-03	21	11077	37904-90	Retaining ring
	24564	11765Y	As above 2004-on	22	11079	37905-90	Retaining ring (each)
8	36139	25408-84	Inner ramp 1991-93	23	11081	37908-90	Retaining ring (5 pk)
	37102	25453-87A	Inner ramp 1994-on	24	11082	37909-90	Retaining ring 1991-on (5 pk)
9	N/A	25409-84A	Ramp & coupler kit 1991-93	25	38977	37911-90	Barnett clutch plates (set of 8)
9A	37103	25409-86A	Outer ramp 1991-93	26	71035	37912-91A	Pressure plate 1991-15 (ea)
	36148	25409-94B	Outer ramp clutch 1994-on	27	38961	37913-90	Steel plate (sold each)
10	13710	25448-84	Lock plate 1986-93 (10 pk)	28	36149	36731-91	Bearing guide
11	37104	34920-86A	Cable coupling	29	62110	37977-90	Riveted plate with internal springs
12	13184	36715-84	Clutch adj. spring 91-93 (10 pk)				
	13210	36715-94	Clutch adjusting spring 94-on				
13	65416	36785-91	Clutch hub 1991-on				



## Starter Ring Gears

For replacement on stock clutch hubs only.

PCP	Description
65409	BT 1990-93 (66T) (bolt-on)
65410	BT 1994-97 (102T) (bolt-on)
76076	BT 1998-06 (102T) (bolt-on)
59165	FLT-FXST 2007-*, FXD 2006-*
65418	78T XL L1984-90
65419	78T XL 1991-03

## XL Clutch Pack Kit

Includes clutch drum, hub, diaphragm spring, steel and friction plates, pressure plate, spring plate, and retaining ring.

PCP	Application
90196	XL 1991-93
90197	XL 1994-03

# Clutch Cables

## Barnett Clutch Cables

Barnett's high efficiency clutch cables feature a nylon coated inner wire and are prelubbed with a super slick silicone lube for a reduced lever effort and ultra smooth performance. Stainless steel cables are clear coated with an extruded Teflon cover that will not discolour due to weather or sunlight.

Overall length of housing measured in inches.



Barnet Clutch Cables						
Model-Touring	O.A.L. (")	Housing Length (")	Black Vinyl		Stainless Steel	
			Standard	Oversize	Standard	Oversize
FL-FLH 1968-86 (38618-68C)	58	48.250	7453	47118 (+6)	47870	47871 (+8)
				47120 (+12)		47896 (+12)
FLD 2012	70	62.5	47129		47894	
FLHP/E 2010-11	67.5	60.250	47128		47880	
FLHR 1994-06 (36801-89)	66.5	63.5	47104		47878	47879 (+8)
FLHR/C 2007	67	59.5	47127			
FLHR/C 2008-12	67.5	60.250	47128		47880	
FLHR-I 1996-06 (36801-89)	66.5	63.5	47104		47878	47879 (+8)
FLHRP 1996-01	66.5	63.5	47104		47878	47879 (+8)
FLHRS, FLHRS-I 2004-06	66.5	63.5	47104		47878	47879 (+8)
FLHRS 2007	67	59.5	47127			
FLHS 1987-88 (36807-87A)	67	60	7439	7440 (+8)	47872	47873 (+8)
FLHS 1989-95	66.5	63.5	47104		47878	47879 (+8)
FLHT/C 1983-86 (38599-83A)	58.5	50	7435			
FLHT 1987-89 (36807-87A)	67	60	7439	7440 (+8)	47872	47873 (+8)
FLHT 1990-05	66.5	63.5	47104		47878	47879 (+8)
FLHT 2007	67	59.5	47127			
FLHT 2008-10	67.5	60.250	47128		47880	
FLHT-I 2005-06	66.5	63.5	47104		47878	47879 (+8)
FLHTC 1987-88	67	60	7439	7440 (+8)	47872	47873 (+8)
FLHTC 1989-06	66.5	63.5	47104		47878	47879 (+8)
FLHTC 2007	67.250	60	47127			
FLHTC 2008-12	67.5	60.250	47128		47880	
FLHTC-I 1996-06	66.5	63.5	47104		47878	47879 (+8)
FLHTCU 1989-00	66.5	63.5	47104		47878	47879 (+8)
FLHTCU-I 1996-06	66.5	63.5	47104		47878	47879 (+8)
FLHTCU 2007	67	59.5	47127			
FLHTCU 2008-11	67.5	60.250	47128		47880	
FLHTCUTG Trike 2009-12	67.5	60.250	47128		47880	
FLHTK 2010-12	67.5	60.250	47128		47880	
FLHTP 2010-11	67.5	60.250	47128		47880	
FLHX-I 2006	66.5	63.5	47104		47878	47879 (+8)
FLHX 2007	67	59.5	47127			
FLHX 2008-12	67.5	60.250	47128		47880	
FLHXX 2010	67.5	60.250	47128		47880	
FLT 1983-86 (38599-83A)	58.5	50	7435			
FLTC 1983-86	58.5	50	7435			
FLTC 1987-88	67	60	7439	7440 (+8)	47872	47873 (+8)
FLTC 1989-05	66.5	63.5	47104		47878	47879 (+8)

# Clutch Cables

Barnet Clutch Cables						
Model-Touring	O.A.L. ("	Housing Length ("	Black		Stainless Steel	
			Standard	Oversize	Standard	Oversize
FLTCU 1989-05	66.5	63.5	47104		47878	47879 (+8)
FLTCU-I 1996-00	66.5	63.5	47104		47878	47879 (+8)
FLTR 1998-02	66.5	63.5	47104		47878	47879 (+8)
FLTR-I 1998-06	66.5	63.5	47104		47878	47879 (+8)
FLTR 2007	67	59.5	47127			
FLTR 2008-09	67.5	60.250	47128		47880	
FLTRU 2011-12	67.5	60.250	47128		47880	
FLTRX 2010-12	67.5	60.250	47128		47880	

Barnet Clutch Cables						
Model- Heritage	O.A.L. ("	Housing Length ("	Black		Stainless Steel	
			Standard	Oversize	Standard	Oversize
FLST 1986 (38611-86)	57.5	46	7436			
FLST 1987-99 (36807-87A)	67	60	7439	7440 (+8)	47872	47873 (+8)
FLST, FLST-I 2001-06 (38604-90)	65.5	62	47110		47884	
FLST 2007-10	69	61.5	47125		47885	
FLSTC 1987-99 (36807-87A)	67	60	7439	7440 (+8)	47872	47873 (+8)
FLSTC, FLSTC-I 2000-06 (38604-90)	69.5	62	47110		47884	
FLSTC 2007-12	69	61.5	47125		47885	
FLSTF 1990-99 (36807-87A)	67	60	7439	7440 (+8)	47872	47873 (+8)
FLSTF, FLSTF-I 2000-06 (38604-90)	69.5	62	47110		47884	
FLSTF 2007 (38666-07)	69	61.5	47125		47885	
FLSTF 2008-12 (38664-07)	65.5	60	47126			
FLSTFB 2010-12	65.5	60	47126			
FLSTN 1990-99 (36807-87A)	67	60	7439	7440 (+8)	47872	47873 (+8)
FLSTN, FLSTN-I 2005-06	69.5	62	47110		47884	
FLSTN 2007-11 (38664-07)	65.5	60	47126			
FLSTN 2012	59.5	55	47133			
FLSTS 1996-99	67	60	7439	7440 (+8)	47872	47873 (+8)
FLSTS, FLSTS-I 2000-06 (38604-90)	69.5	62	47110		47884	
FLSTSB 2008-11 (38883-08)			47134			
FLSTSC-I 2005-06	69.5	62	47110		47884	
FLSTSC 2007 (38666-07)	69	61.5	47125		47885	

# Clutch Cables

Barnet Clutch Cables						
Model FX, FXD & FXDWG	O.A.L. (")	Housing Length (")	Black		Stainless Steel	
			Standard	Oversize	Standard	Oversize
FXCW 2008-09	69	61.5	47125		47885	
FXCWC 2008-11	69	61.5	47125		47885	
FXD 1996-99	72.5	65.750	47119		47876	47877 (+8)
FXD 2000-05	69.5	62	47110		47884	
FXD-I 2004-05	69.5	62	47110		47884	
FXD-I 2006-10	69	61.5	47130		47891	
FXDB 1991 (36807-87A)	67	60	7439	7440 (+8)	47872	47873 (+8)
FXDB 1992-95 (36802-92)	72.5	65.750	47119		47876	47877 (+8)
FXDB-I 2006-12	73	65.5	47131		47895	
FXDB-135 2006-07	69	61.5	47130		47891	
FXDC 1992-95	72.5	65.750	47119		47876	47877 (+8)
FXDC, FXDC-I 2005	69.5	62	47110		47884	
FXDC 2006-07	69	61.5	47130		47891	
FXDC 2008-12	70	62.5	47129		47894	
FXDF 2008-12	65	57.750	47132		47895	
FXDL 1992-00	72.5	65.750	47119		47876	47877 (+8)
FXDL 2001-05	69.5	62	47110		47884	
FXDL-I 2004-05	69.5	62	47110		47874	
FXDL-I 2006-12	70	62.5	47129		47894	
FXDS 1992-95	72.5	65.750	47119		47876	47877 (+8)
FXDS-CONV 1996-05	72.5	65.750	47119		47876	47877 (+8)
FXDWG 1992-05	72.5	65.750	47119		47876	47877 (+8)
FXDWG-I 2004-05	72.5	65.750	47119		47876	47877 (+8)
FXDWG-I 2006-07	73	65.5	47131			
FXDWG Anniversary 2008	73	65.5	47131			
FXDWG 2010-12	69	61.5	47130		47891	
FXDX 2000-05	69.5	62	47110		47884	
FXDXT 2002-04	69.5	62	47110		47884	
FXE 1984-85 (38618-68C)	58	48.250	7453	47118 (+6)	47870	47871 (+8)
FXLR 1987-95 (36753-87A)	66	59.5	7441		47892	
FXS 2012	59.5	55	47133			
FXSB 1983-85	58	48.250	7453	47118 (+6)	47870	47871 (+8)

## Clutch Cable Adjuster Cover

Die cast, chrome, two piece cover installs over clutch adjuster using two snap rings so the clutch cable does not have to be removed. Fits BT L1987-99, XL 1988-99.

44032



## Chrome Billet Clutch Cable Mount

Fits Softail models.

73707

# Clutch Cables

Barnet Clutch Cables						
Model-FXR	O.A.L. ("	Housing Length ("	Black		Stainless Steel	
			Standard	Oversize	Standard	Oversize
FXR 1983-86 (38599-83A)	58.5	50	7435			
FXR 1987-94 (38606-87A)	69	62	7437	7438 (+6)		
FXR-2 & FXR-3 1999-00	67	60	7439		47872	
FXR-4 2000			47121			
FXRC late 1985	58.5	50	7435			
FXRC late 1987	69	62	7437	7438 (+6)		
FXRD 1986	58.5	50	7435			
FXRDG late 1984	58.5	50	7435			
FXRS 1983-86	58.5	50	7435			
FXRS 1987-95	69	62	7437	7438 (+6)		
FXRS Convertible late 1989-95	69	62	7437	7438 (+6)		
FXRS Sport Edition L1985-86	58.5	50	7435			
FXRS Sport Edition 1987-94			7442			
FXRT 1983-86	58.5	50	7435			
FXRT 1987-92	69	62	7437	7438 (+6)		
FXS 2012	59.5	55	47133			

Barnet Clutch Cables						
Model-FXST & FXWG	O.A.L. ("	Housing Length ("	Black		Stainless Steel	
			Standard	Oversize	Standard	Oversize
FXST 1984-85 (38618-68C)	58	48.250	7453	47118 (+6)	47870	47871 (+8)
FXST 1986 (38605-86)	61.5	50	47106	47107 (+8)	47108	
FXST 1987-99 (38607-87A)	67	60	7439	7440 (+8)	47872	47873 (+8)
FXST 2000 (38604-90)	69.5	62	47110		47884	
FXST STD, FXST-I STD 2001-06	69.5	62	47110		47884	
FXST STD 2007-12	69	61.5	47125		47885	
FXSTB 1995-97			47121			
FXSTB, FXSTB-I 2000-06	62	55.5	47112		47888	
FXSTB 2007-09	59.5	55	47133			
FXSTC 1986	61.5	50	47106	47107 (+8)	47108	
FXSTC 1987-99	67	60	7439	7440 (+8)	47872	47873 (+8)
FXSTC 2007-10	69	61.5	47125		47885	
FXSTD 2000 (38639-00)	65	58.5	47114			
FXSTD,FXSTD-I 2001-06	65	58.5	47114			
FXSTD 2007	67	60	47126			
FXST-SE 2003-05	65	58.5	47114			
FXSTS Late 1988-99	67	60	7439	7440 (+8)	47872	47873 (+8)
FXSTS 2000-06	69.5	62	47110		47884	
FXSTS-I 2001-06	69.5	62	47110		47884	
FXWG 1981-86	58	48.250	7453	47118 (+6)	47870	47871 (+8)

# Clutch Cables

Barnet Clutch Cables						
Model-Sportster	O.A.L. (")	Housing Length (")	Black		Stainless Steel	
			Standard	Oversize	Standard	Oversize
XLH 883 1986-95	58.5	51.5	7449	7450 (+8)	47620	
XLH 883C 1999-10	58.5	51.5	7449	7450 (+8)	47620	
XLH 883 Deluxe 1987-95	58.5	51.5	7449	7450 (+8)	47620	
XLH 883 Hugger Late 1987-95	64	56.750	7451	7452 (+8)	47640	
XLH 883 Hugger 1996-01	61.750	55	47124		47621	
XLH 883 Hugger 2002-03	58.5	51.5	7449	7450 (+8)	47620	
XLH 883L 2002-06	58.5	51.5	7449	7450 (+8)	47620	
XLH 883L 2007-10			47135		47641	
XLH 883L 2011-12	58.5	51.5	7449	7450 (+8)	47620	
XLH 883N 2007-12	58.5	51.5	7449	7450 (+8)	47620	
XLH 883R 2002-03, 2006	58.5	51.5	7449	7450 (+8)	47620	
XLH 883R 2007-12	58.5	51.5	7449	7450 (+8)	47620	
XLH 883 Standard 1996-09	58.5	51.5	7449	7450 (+8)	47620	
XLH 1100 1986-87	64	56.750	7451	7452 (+8)	47640	
XLH 1200 1988-95	64	56.750	7451	7452 (+8)	47640	
XLH 1200 Standard 1996-01	61.750	55	47124		47621	
XLH 1200 Standard 2002-03	58.5	51.5	7449	7450 (+8)	47620	
XLH 1200C 1996-06	58.5	51.5	7449	7450 (+8)	47620	
XLH 1200C 2007-10, 2012	58.5	51.5	7449	7450 (+8)	47620	
XLH 1200CP 2012			47137			
XLH 1200L 2007-11			47135		47641	
XLH 1200N 2007-12			47135		47641	
XLH 1200R 2004-09	58.5	51.5	7449	7450 (+8)	47620	
XLH 1200S thru 2001	58.5	51.5	7449	7450 (+8)	47620	
XLH 1200S 2002-03	61.750	55	47124		47621	
XLH 1200V 2012			47137			
XLH 1200X 2010-12	58.5	51.5	7449	7450 (+8)	47620	
XR 1000 (all)	50	36.5	7448			
XR 1200 2010			47136			
XR 1200X 2010-12			47136			



## Clear Heat Shrink Tubing

Use on all braided stainless steel cables to prevent scratching of chromed or painted surfaces. Kit contains 4-16" long heat shrink tubes to cover 2 throttle cables, 1 clutch and 1 speedo cable. Bulk tubing comes in a 10 foot roll.

### PCP Application

- 28713** Cable sleeve kit
- 28714** 3/8" x 10' roll
- 28715** 1/2" x 10' roll
- 28716** 3/4" x 10' roll



## Clutch Cable Boot

Rubber boot fits over the in-line adjuster on BT and XL 1988-99.

**23061** 38630-88



## Clutch Cable Adjuster Cover

Chrome plated polished brass cover fits 1987-on BT and XL. Cover locks into place over adjuster at the clutch cable adjustment cover: when secured by a stainless screw kit. Cover will retro fit to Barnett or stock cables.

**44018**

# Clutch Cables



## Braided Stainless Steel Cables 1987-06

Features clear PVC sleeve.

PCP	Casing Length	Length	OEM
47618	62.69"		38607-87A
47622	63"		
47637	65.69"	+2"	
47638	66.5"	+4"	
47639	69.25"	+6"	
47623	75.625"	+8"	
47642	74.5"	+10"	
47643	75.25"	+12"	36807-87
47644	79"	+16"	
47645	62.69"		38601-89

## M&M Clutch Cables

Constructed from Supra stainless steel braid which is tightly woven for a bright, quality consistent finish. Features UV resistant, heat bonded, non yellowing clear coat for lasting performance. All applications include adjuster, inner lengths and correct fittings for exact installation and fitment. Cables are stock length except where noted.

PCP	Application	Length
21840	2007-on BT	72.81"(extended)
21841	2007-on FLT (38667-07)	62.51"
21842	2007-on FXDWG (38789-06A)	68.81"
21843	2007-on FXST (38666-07)	64.75"
21844	2007-on FXSTD (38664-07)	62.66"
21845	2007-on FXD (38787-06A)	64.57"
21846	2007-on FXDL (38788-06A)	65.66"



## +12" Clutch Cables

With black vinyl casings for use with those high handlebars.

47301 FXST 1987-99

## FLH MODELS

PCP	Fits
541	FL 1968-86 STD length barrel end (38618-68)
446	1968-86 +6" Longer barrel end (38618-68)
3627	1979-on STD length ball end (38618-68A)

## FLT MODELS

3631	FLT, 1984-86 FLHTC, FLTC, FLHT, Classic 1983-86 STD length (38599-83)
------	---

## FX MODELS

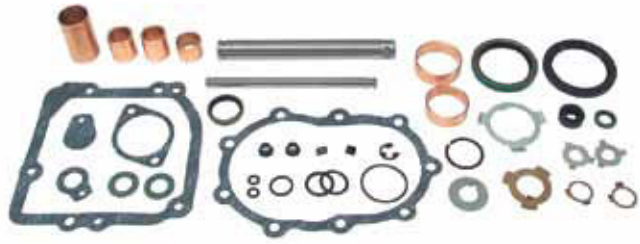
3627	FXST 1984 STD Length (38618-68A)
3631	FXR, FXRS, FXRT 1983-86 STD length (38599-83A)



## Cable Brackets and Adapters

PCP	Fits
16200	(A) Chrome clutch cable support bracket for all 5 speed models 1980-86. Keeps cable away from cylinders (each)
3271	(B) Chrome FLH clutch cable router 1968-84. (5 pk)
1297	(D) Chrome cable repair clamp for levers (each)

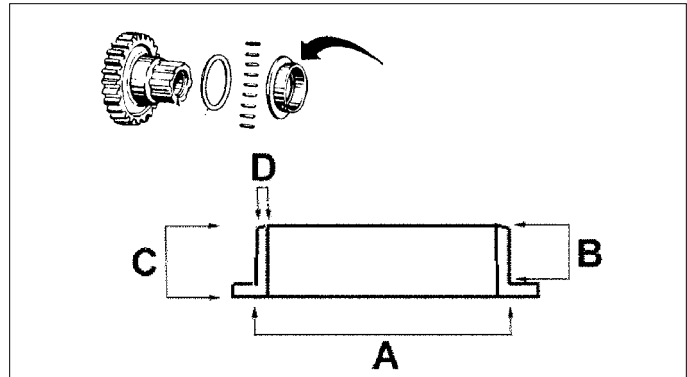
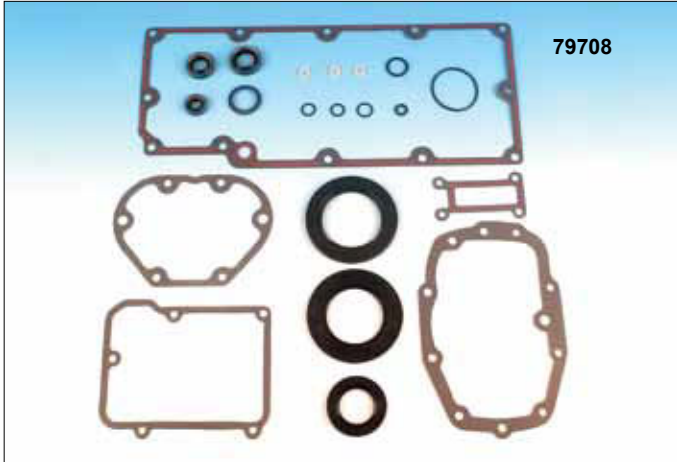
# BT Gear Box



## Trans Rebuild Kits-Jims

These kits have proven Jims Machining parts to start with and then complimented with James Gaskets. Includes a standard size race.

**31273** Big Twin 4 speed 1980-86



## Transmission Gasket Kits for Big Twin

Transmission kits contain all the gaskets and seals needed to rebuild Big Twin transmissions.

### James Fits

- 79710** 1936-86 Big Twin 4-spd (33031-70)
- 79706** 1980-99 Big Twin 5-spd (33031-85)
- 79707** 1991-98 Dyna (33031-91)
- 79708** 1993-98 FLT, FLHS (33031-93)

## For Big Twin 4 Speeds 1982-86

PCP	Description	A	B	C	D
<b>11501</b>	All chain drive 1982-85 (35079-82A, 35079-84)	2.062	.355	.435	.272
<b>11500</b>	All belt drive 1982-86 (35070-82A)	2.062	.305	.385	.272



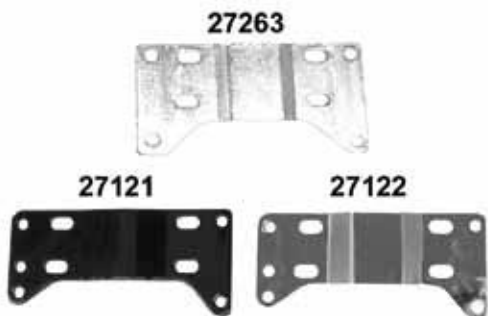
## Magnetic Drain Plugs

PCP	Size	Use
<b>10610</b>	3/8 x 24	BT Case plug (700 not magnetic)
<b>10611</b>	1/2 x 13	74 & XL Trans (707)
<b>10615</b>	1/4 x 18	NPT chain cover (718)
<b>10612</b>	5/8 x 18	Oil tank & time hole (720)
<b>10616</b>	5/8 x 18	FXR drain (722A)
<b>10613</b>	1/8 x 27	NPT 1987-89 BT primary trans FXST-FXR (734, 739A)
<b>10619</b>	1/8 x 27	NPT 1990-03 BT trans (739A)
<b>10618</b>	1/2 x 20	74 & 80 Inner primary (60348-65A)

Prevents metal particles from circulating through engine and transmission cases, oil tanks, etc.



# Big Twin Trans Mount



## Chrome Steel Transmission Mount Plates

PCP	Application
27263	Zinc rigid mount 5 speed trans in 4 speed frame
59167	Chrome 4 speed trans in a 5 speed frame
27121	Black FXST, FLST 1986-99 (47698-86B)
27122	Chrome FXST, FLST 1986-99 (47698-86B)



## Chrome Softail Transmission Plate Kit 86-99

Kit includes transmission mount plate and installation hardware.  
27127



## BT Trans Mount Kit

Includes bolts and washers necessary for installation.

PCP	Year	Finish
9420	1977-86	Chrome
9421	1977-86	Zinc
9867	1986-99	Zinc, FXST 5 speed
9866	1986-99	Chrome, FXST 5 speed



## Trans Mounting Plate to Frame Kit

1800 Fits Big Twin 4 speeds 1936-86

## Transmission Case Bottom Stud

Colony reproduction studs are 7/16-14 x 3/8-24. Fits Softail 1986-99.

9863 11733 (5 pack)

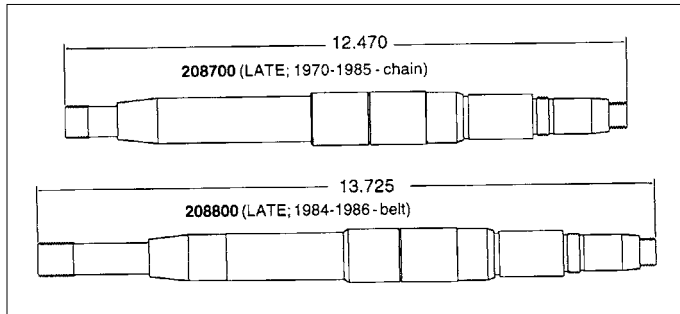


## BT 5 & 6 Speed Bearing Support Plate 1984-00

Fits 1984-2000 BT models with kickstart. Billet aluminum support plate includes bearing. Custom application.

21778

# BT 4 Speed



## Andrews Products makes four different versions of 4 speed Big Twin mainshafts

Regarding mainshaft H-D # 35039-84, fits belt drives. This is the same part as H-D #35039-85 except that 35039-85 uses a different drive key. **It is very important that the correct drive key be used.** It is H-D # 37523-85. Andrews part number for this shaft is **208800**.



## Transmission Mainshafts

Replacement mainshafts for all versions of BT boxes. Made from aircraft alloy steel with heat treatment and finish grinding to ensure maximum durability.

- 208700** 35039-70A 1970-E85 chain drive
- 208800** 35039-85 1985-86 belt drive



## Transmission Countershafts

Replacement countershafts fit transmissions thru 1985. They are not interchangeable, so be certain before you order.

- 207800** 35614-80 1980-85



## Eastern Transmission Mainshafts- USA

- 36182** L1984-86 4 speed belt drive (35039-85)



## Jims 4 Speed BT Mainshaft

Precision machined mainshaft for Big Twin 4 speeds 1970-E84.

- 31300**

# Trans Plugs



## Oversize Drain Plug and Tap Kit

Contains 1 chrome plated dome head plug with an oversized thread and one tap for rethreading the stripped out drain hole. Fits O.H.V. Big Twin Harley Engines 1965-84.

- 1760** Kit
- 1761** Oversize drain plug only



## Timing Plug - Oil Tank Plug

Chrome plated plug fits Harley Davidson timing holes.

- 5258** 1981-on Big Twins (1/2 x 20)

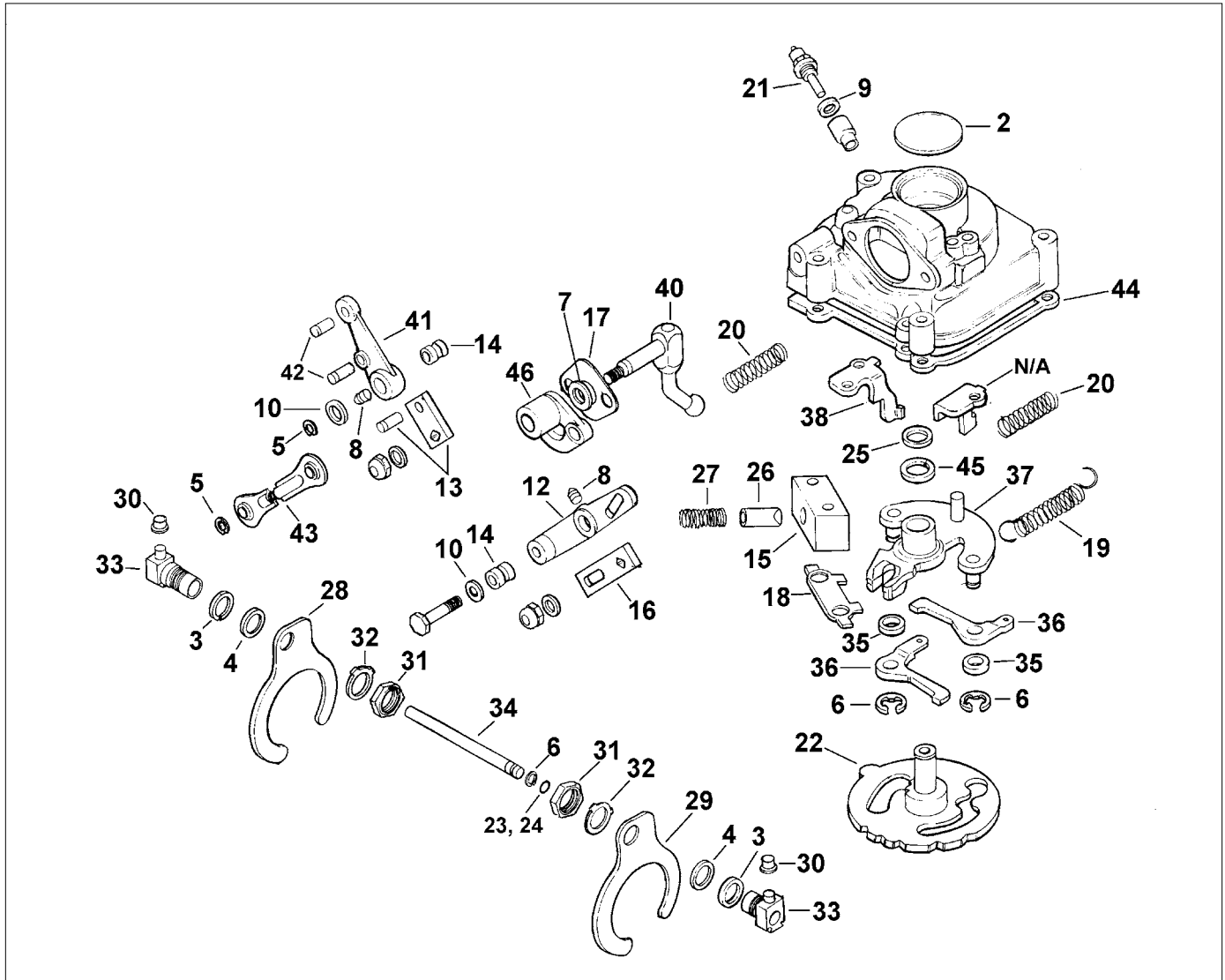


## Oversize Timing Plug and Tap Kit

Contains 1 chrome plated acorn head plug with an oversized thread and one tap for rethreading the stripped out timing hole. Fits all Harley Davidson timing holes.

- 1758** Kit
- 1759** Oversize timing plug only

# BT Rotary Shifter 1979-86



#	PCP	OEM	Description	#	PCP	OEM	Description
2	10602	650	Plug (each)	25	11062	34040-52	Retaining ring (10 pk)
3	13555	6750	Shim (.007) (10 pk)	26	36102	34062-52	Cam follower (ea)
4	13556	6752	Shim (.015) (10 pk)	27	13178	34068-52A	Cam follow spring (10 pk)
5	11011	11016	Snap ring (10 Pk)	28	228	34158-36	Main shift fork (ea)
6	11018	11036	Pawl retainer (10 pk)	29	229	34159-36	Countershaft shift fork (ea)
7	14010	12010	Cover oil seal (5 pk)	30	1544	34168-52	Finger roller (2) (pr)
8	10515	25715-47	Grease fitting (10 pk)	31	12549	34179-33	Bushing nut (5 pk)
9	79116	25811-11	Switch washer (20 pk)	32	13723	34180-33	Lockwasher (10 pk)
10	11533	32535-48	Lever washer (5 pk)	33	36115	38184-79	Shift finger (ea)
12	4787	33177-79	Lever complete FL-FXWG (ea)	34	36116	34186-76	Fork shaft (ea)
13	36111	33185-79	Shift rod assembly FX-FXE (ea)	35	36117	34461-72	Shift pawl spacer (pr)
14	18700	33187-79	Spacer STD (5 pk)	36	36118	34476-72	Shifter pawl (1979-86) (pr)
	18701	-	Spacer .020 O.S. (5 pk)	37	37133	34494-74C	Pawl carrier (ea)
15	36112	33188-79	Plunger body (ea)	38	36120	34517-80	Rear pawl stop (ea)
16	36113	33190-79	Lever arm FL-FXWG (ea)	40	36122	34652-80	Cast shift lever shaft (ea)
17	25111	33196-79	Cover gasket, shifter (10 pk)	41	36128	33177-79	Forged chrome FLH lever shaft
18	13715	33197-79	Bolt lock (10 pk)		16528	34655-79	Lever complete FX/B/E (ea)
19	13169	33199-79	Pawl spring (10 pk)	42	10137	34658-79	Lever pin (ea)
20	13170	33201-79	Carrier spring (10 pk)	43	16562	23659-79	Rod linkage FX (ea)
21	28101	33901-79	Neutral switch (ea)	44	79324	34824-79	Cover gasket L1979-86 (10 pk)
22	36114	34020-79B	Cam assembly (ea)	45	11532	35336-74	Thrust washer (5 pk)
23	14039	34036-36	Oil seal (10 pk)	46	36138	33174-79	Chrome shift cover (each)

# Shifter



## Replacement Parts for Shift (left side) on FXST

PCP	Item
12001	Nylon washer (6057)
14562	O-ring (11191) (10 pk)
37205	Shift lever (33660-90B)
61055	Lever bracket (33683-00)
18635	Bracket bushing (33708-94)
36133	Shifter rod kit (33719-79A)
37518	Shift lever arm (34564-90A)
3247	Shifter rubber black w/chrome end (34611-65)
1147	Shifter rubber, all black



## Replacement Parts for Shift (left side) FLST

PCP	Item
12001	Nylon washer (6057)
14562	O-ring (11191) (10 pk)
36133	Shift rod kit (33719-79A)
37207	Shift lever (33668-90B)
18635	Bracket bushing (33708-94)
37516	Shift lever arm (33895-82)
3247	Shifter rubber black w/chrome end (34611-65)
1147	Shifter rubber, all black



## FXST Jockey Pedal/Handle Kit

Includes chrome pedal, plate, cable, and chrome handle. For custom application.

PCP	Application
59328	1986-99 Kit
59331	1986-99 Cable

Refer to OEM Parts book for breakdown



## Billet Jockey Shifter Kit 86-99 FXST

Includes top mount and rod. Order knob separately. For custom application.

82107



## XL Chrome Shift Lever Assemblies

Includes Iso shift peg.

PCP	Application
21718	1986-90
21719	1991-03
21720	2004-on



## Chrome Shifter Control Kit

- With splined shifter arms & allows the use of the footpegs
- Use the existing components on the shifter mechanism
- Features 1 down, 3 up shifting pattern
- Fits FXST 1986-99

90246

# Shifter



**Shift Control Cover Kit FL Softail 2000-06**  
63052 (33825-00)



**Chrome Billet Shift Lever 1990-on**  
59134 Softail 1990-on and FXDWG 1991-on



**Billet Shifter Lever with Footpeg**  
Chrome billet vented shifter lever with soft shifter peg.  
Fits XL 2004-on.  
21736



**Batique Shift Peg**  
73701



## Shifter Pegs

PCP	Style	Type
39019	O-Ring	Rotating
39017	Railer	Chrome with rubber
39024	Cats Paw	Chrome with rubber, 3/8" stud
39025	Cats Paw	Chrome with rubber, 5/8" stud
39018	Cats Paw	Chrome with rubber 1" longer
1402	O-Ring	Chrome with o-ring
1147	Stock	Black with 1/2" stud
5432	Stock	Black with 3/4" stud
5433	Stock	White with 3/4" stud



**Chrome Diamond Accent Shift Peg**  
Peg features diamond shape rubber insert and short stud (1/2"), chrome casting and fits 1941-on models.  
39142

# Shifter



## Self-Aligning Rod Ends

Heim joint type swivel allows alignment at up to 28° off centre, self lubricating brass ball socket available for shifter or brake rod ends, 5/16 x 24 thread, for rod end, with integral stud (5/16 x 24) or with 5/16 hole for attaching as direct bolt on.

PCP	Size	Type	Finish
4639	1-7/8"	Ball Stud	Chrome
37208	1-7/8" Rod end	Hole	Chrome
16256	5/16 x 24 x 3/8	Ball stud	Chrome
16257	5/16 x 24 x 5/8	Ball stud	Chrome



## Forked Rod End Clevis

Clevis has 5/16 x 24 threads for use on shifter or brake rods.

PCP	Pin Size
37217	1/4"
37218	5/16"

## Chrome 5/16" Shift Rod Extension

With male and female ends.

PCP	Length
73640	2"
73641	3"



## Shift Rod Jam Nuts

Features tapered design to cover excess rod thread. Pairs.

12653	5/16 x 24
-------	-----------

## Chrome Heim Joints

Heim joints have a variety of uses and are especially useful for custom shift and brake linkage creation. The 5/16" joints are available with left or right hand threads.

PCP	Size	OAL
71009	1/4" x 1/4-28 female	1-3/4"
71014	5/16" x 5/16-24 female	1-7/8"
71013	5/16" x 5/16-24 female	2"
71010	5/16" x 5/16-24 male	2-1/4"
71011	5/16" x 5/16-24 female	2-7/8"
71012	5/16" x 5/16-24 male (LHT)	2-1/4"
71015	3/8" x 3/8-24 female	2-1/8"

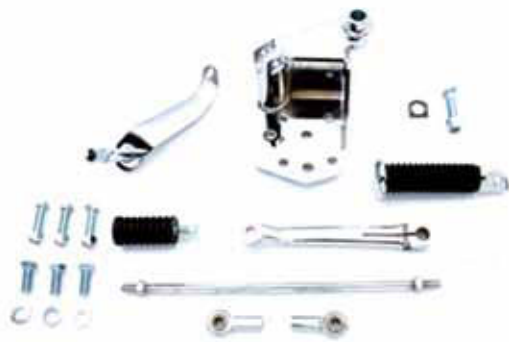


## Chrome Straight Shift Rods

Rods measure 5/16" in diameter with 5/16 x 24 thread at each end.

PCP	Length	Finish
37193	3-5/8"	Chrome
37194	7-3/4"	Chrome
37195	10-5/8"	Chrome
37211	11"	Chrome FXST 1985-99
37198	11-3/4"	Chrome
37191	12-1/2"	Chrome
37192	13-1/2"	Chrome
37199	14-1/2"	Chrome
37201	20-1/4"	Chrome

# Shifter Brackets



## FXST Style Forward Shifter Kit

Complete kit with all hardware necessary for installation on 1981-on 5-speed Big Twin models. Use in conjunction with our FXST Replica Controls, as all kits place pegs in a forward position parallel to the peg on brake side. Foot rests on peg while shifting for added comfort. This is an exact stock replacement in chrome for the 1980-85 FXWG, 1984-on FXST. Kit includes chrome heavy duty shifter bracket, inner lever shifter lever, rod, rubber shift peg and foot peg, display packaged and labelled with detailed instructions and assembly diagram for each model listed below.

**6462** 1982-94 5-Spd. FXR-FXS-FXRS



## Chrome Shifter Control Kit

For 1980-85 4 Speeds and FL 1979-on

**6319**



## Chrome Shifter Shafts

A wide selection of all-chrome shifter shafts to replace the OEM part on many Big Twin models 1970-91.

**PCP Fits**

**3094** 5-speed FXR models with diaphragm clutch L84-94 (34621-84)

**11016** Retaining ring for the shift arm on 1965-86 4-speeds. (11031) (10 pack)



**1454**



**27303**

## 1980-on FXWG-FXST Shifter Bracket

This heavy duty bracket features a built in footpeg mount and chrome finish. Peg clevis is aligned to match with forward brake mounts. Fits FXWG models 1980-86, FXST 1984-89 and many custom applications. Replaces 33683-80.

**1454**

## Chrome Shift Mount Bracket

One piece design fits FXST 1990-99.

**27303** 33683-90A



**59637**



**37523**



**37524**

## Chrome Inner Shift Levers Softail 2000-on

**PCP Type**

**59637** Solid FXST 2000-06 (33660-90B)

**59638** Slotted as above

**37522** Solid FXDWG 2003-05 (33789-03)

**37523** Solid FXST 2007-\* (33660-07)

**37524** Solid FLST 2007-\* (33668-07)



## Chrome Shifter Cover

Fits FLSTC/FL 1989-99.

**45502** 33642-89

# Shifter Levers



## XL Chrome Shift Lever

Fits Evolution Sportster models 1986-90. OEM 34606-86  
Chrome.  
**2065**



## XL Chrome Shift Lever

Fits all 5-speed Evolution® Sportster®.  
**37510** 1991-03 (34606-90)



## Billet Chrome XL Shift Lever and Pedal

Fits 1991-03 Sportster models except 1999-on XL Custom. Will not work with XL forward control kit #33891-98 and 33892-98.  
**59496**



## XL Chrome Shift Lever 2004-on

Fits 2004-on XL 5 speeds.

**PCP Style**

**21699** Smooth (34660-04)

**21721** Open slot



## FXWG Chromed Shifter Lever

Fits models 1974-84 and FXWG models 1980-86 with 32T splines (OEM 33664-81). Also fits 1984-85 FXST and 1981-86 FLHS.

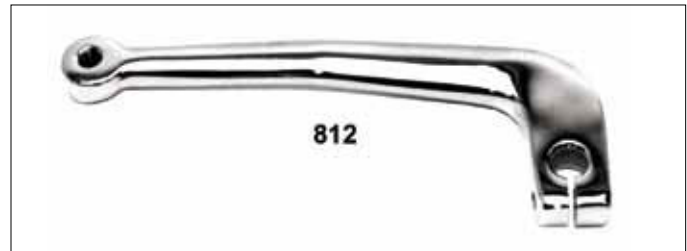
**1451** Splined

**37511** No spline



## FXR Chrome Shifter Lever

Fits all FXR models 1982-94 and FXRT 1982-99 (OEM 34599-81)  
**3254**



## FX Chrome Shifter Lever

Fits all FX models 1974-85 with shifter through primary case and all Softail models 1986-on (except Heritage 1986-91) Also fits 1991 Dyna Glide.

**812** FX 74-85, Dyna & Softail 86-01, except FLST (34564-74A)

**37518** FXST 90-on, FXD/WG 91-on, FX 81-86 (34564-90A)

# Shifter



## Chrome Heel Toe Shifter

**PCP Application**

**37515** FLT 1983-99 (33640-83)

**37516** FLST 87-on, FLT 83-96 & FLT 00-on (33895-82) (each)  
Toe shift

**37521** FXD 91-05 with floorboard kit #50601-01 or 50580-01  
(33756-01)



## Heel Shift Lever

Features swivel peg location to fold out of the way. Fits 1986-on FLST, 1988-on FLT, FLHT.

**37520**



## Chrome Foot Shift Lever

Heel-toe shift lever with 5/16"-24 threads to fit 2004-on XL.

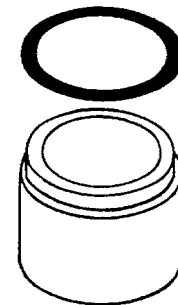
**37512**



## Chrome Heel Toe Shifter Lever Set

Fits 1986-on FLT.

**37526**



## Grease Eliminating Spacer

Stepped spacer with o-ring are designed to replace OEM 5702 on FLT 1979-on shift shafts.

**11824**



## Billet Heel Toe Shifter Set 1986-on

**59640** FLST, FLT, FLHT 1986-on



## Extended Chrome Shift Lever

Levers are 8-1/2" long for extended reach.

**37519** 1987-on FXST and 1986-05 FLT



## FLST-FLT Heel Toe Shift Lever 1986-on

Chromed billet aluminum.

**21708**



## Greaseable Shifter Shaft (Thru Primary)

Will replace OE shaft to hold extra lube for added lubrication on FLT 1982-09. Replaces 23709-82.

**36188**

# Shifter



## Chrome Billet Skull Shift Rods

Order ends separately. Overall length includes threaded ends.

**PCP**    **Length**

**21752**   12.25"

**21753**   11.00"



## Chrome Maltese Shift Rod

**PCP**    **Length**

**59659**   10-3/4"



## Billet Twisted Shift Linkage Softtail 1986-on

**59661**



## FLT Shift Shaft Spacer Kit

Short spacers are for use with heel/toe shifters. Longer spacers are used to eliminate the heel shifter or for use on single shifter models.

**PCP**    **Description**

**11824**   Short without ring 1979-on

**11846**   Short with anti-rattle washer

**11847**   Long with anti-rattle washer

## FX Shift Rod Kits

PCP	Application	Finish
<b>36179</b>	1990-05 FXDWG	Chrome
<b>36180</b>	1990-05 FXDWG	Zinc
<b>21750</b>	2006-on FXDWG	Chrome
<b>21746</b>	1991-05 FXD	Chrome
<b>21747</b>	1991-05 FXD	Zinc

## Chrome Splined Shaft Cover FLT 1994-02

Covers shifter shaft when forward controls are used on FXD models and FLT 1994-02 models when heel shifter arm is removed.

**44093**   37912-91A (each)



# Shifter



**T/L Chr/Shift Linkage Covers 1999-on Touring**  
 Chrome plated covers easily install over the stock shifter linkage. Covers include mounting hardware to fit 1999-on Touring models.

**PCP Design**  
**29672** Diamond (46301-01)



**T/L Chrome Shifter Linkage Cover-Softail**  
 Chromed covers include mounting hardware and install easily over the stock shifter linkage. Fits 1999-on Softail models with stock shifter linkage. Does not fit FLSTS models or models using dual crossover exhaust systems.

**PCP Design**  
**62035** Diamond (46300-01)



**Polished Dyna Shift Linkage 1991-on**  
 Polished stainless steel linkage replaces original zinc piece.

**62284** 1991-05 FXD, FXDX, FXDL, FXDS-Conv with mid controls (33872-00)  
**62285** 2006-on Dyna w/mid controls (33872-06)  
**62287** 2006-on FXD/WG w/forward controls (33815-06)



**Chrome FLT Shift Rod Kit 1980-on**  
**36133**



**FXD Chrome Shifter Arm Cover**  
 Fits FXD 1991-05. Replaces 33890-88A.  
**44027**



**Chrome Billet Shift Rod Kit Softail 86-on**  
 Includes heim joint ends. Stock length rod is 10-5/8" long.

PCP	Style	Size
<b>59269</b>	Round	Stock
<b>59263</b>	Slot	Stock
<b>59270</b>	Slot	+3" extended



**21831**



**21814**

## Black Shifter Rods

With swivel studs.

**21814** 1980-98 FLT/FLHT/FLHR; 1993-02 FXDWG; 1986-10 FXST/FLST except 1997-99 FLSTS  
**21831** 1999-10 FLT/FLHT/FLHR/FLHX



## Talon Style Shifter Rod

- CNC billet aluminum with black finish & a raw cut design
- Includes swivel rod ends and hardware
- Fits 2004-on XL with forward controls

**21805**

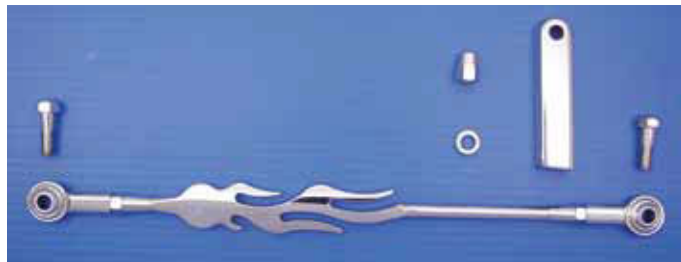
# Shifter



## Chrome Skull Shift Rod Kits

Includes ends. Length is rod length with threads included.

PCP	Length
21895	11"
21705	12.25"
21896	13.75"



## Chrome Flame Shift Rod Kits

Includes ends. Length is rod length with threads included.

PCP	Length	Model
59662	11x 3/4"	93-05 FXDWG
59663	11x 3/4"	86-on FLST, 94-on FLHR
59666	+2"	00-on Softail
59667	+3"	00-on Softail



21892



21893

## Skull Shifter Linkage

PCP	Model	Finish
21891*	1999-12 FLHT	Black
21892*	1999-12 FLHT	Chrome
21893	1984-10 Softail	Black
21894	1984-10 Softail	Chrome

\*Note: adjustable from 11.5" to 12.5"



## Transmission Pulley Indexing 'Mega' Nut

Nut allows drilling and tapping for additional set screw locations. Fits FLT, FLST, FXST 93-06, FXD 93-05, FXR 93-94 and XL 91-on.

12629	Preston 5 speed
31022	Jims5 speed
12644	Preston BT 2007-on 6 speed



## BDL Evo Transmission Pulley-USA

Light weight 356T6 aluminum transmission pulleys are about 1/3 the weight of stock pulleys which will extend the life of the 5th gear bearing and increase horsepower transfer to the rear wheel. The steel insert is gear cut to provide maximum bonding with aluminum when cast. The pulleys are hard anodized and include a spacer, seal and retaining plate with screws.

### Evo BT 1985-05 5 Speed

PCP	BDL	Description
76406	TP-29	29T
76407	TP-30	30T
76408	TP-31	31T
76409	TP-32	32T (stock)
76410	TP-33	33T
76411	TP-34	34T

### Evo XL 1991-03

PCP	BDL	Description
76412	TPS-28	28T
76413	TPS-29	29T
76414	TPS-30	30T

## XL Trans Pulley

29 Tooth pulley for 1991-on.

59494 .750 offset



## 30T Front Pulley

- Graphite cast iron pulley with nut, lockplate & screws
- Fits 1984-93 FLT, FXR, FXST, 1986-93 FLST, 1991-93 FXD

37247

# Transmission Belt Pulleys



## BT 5 Speed Transmission Pulley 1985-on

Stock style, steel replacement pulleys. Stock size is 32T.

### Imported

**PCP** BT 5 Speed 1985-93

**37221** 30T

**37222** 32T (40210-85B)

**37220** 32T Alloy, not steel

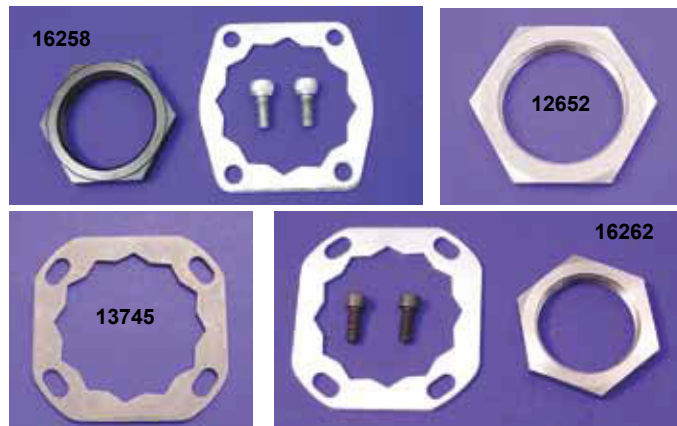
Uses kit #16330 to allow installation on 85-06

**37223** 34T

**PCP** BT

**37224** 32T 5 Speed 1994-06 BT (not 06 Dyna) (40250-94)

**37226** 32T 6 Speed 2007-on BT and 2006 Dyna



## Transmission Pulley Lock Plate and Nut Kit

Kit includes: 2 allen screws (35211-91), sprocket lock nut and lock plate (40251-92).

**16258** Kit BT 93-06, XL 91-on, FXD 91-05

**13741** Lock plate BT 93-06 (40251-92A)

**12602** Nut only BT 91-06 and XL to 2008 (35211-91A)

**16262** Kit BT 07-on, Dyna 06-on, 6 speed

**13745** Lock plate BT 07-on & Dyna 2006 (35242-06)

**12652** Nut only BT 2007-on & Dyna 2006-on (35241-06)

**24567** Set screw 1993-on (3594) (10 pk)



## Transmission Drive Belt Pulleys-USA-5 Speed

PCP	OEM #	Tooth	Type	Model
290290	--	29T (Andrews)	Power	BT 1985-93
290294	--	29T (Andrews)	Power	BT 1994-06
290300	--	30T (Andrews)	Power	BT 1985-93
290304	--	30T (Andrews)	Power	BT 1994-06
290340	--	34T (Andrews)	Overdrive	BT 1985-93
290344	--	34T (Andrews)	Overdrive	BT 1994-06
3565	--	33T (Karata)	Overdrive	BT 1994-06
65509	40256-89	27T (Import)	Stock 4 Spd	XL1986-90



## BT Transmission Drive Pulley Kits

Includes billet pulley which accepts 1.125" or 1.5" wide belts, indexing nut seal and seal spacer.

PCP	Year	Speed	Tooth
21781	1984-93	5	32
21782	1994-06	5	32



## BT Front Pulley Lock Plate Kits

Includes correct spacer to mount drive pulley.

PCP	Year
16339	84-93
16334	94-06
16330	85-93 (Allows use of 94-06 front pulley on 85-93)

# Andrews BT Trans Belt Pulleys



More teeth on pulleys means higher MPH and less RPM. Fewer teeth means higher RPM and more power than a stock 32 tooth pulley. Pulleys are available to fit all EV80, Twin 88 and Twin 96 transmissions. Pulleys have tooth counts of 29, 30, 31, 33 & 34 for 5 speeds and 30, 31, 32 or 34 for new 6 speeds.

**Note: All 2007-on Twin 96 and 2006 Dynas MUST use the new part number pulleys. Pulleys made for 5 speed transmissions will not fit HD 6 speed transmissions.**

## Stock Replacement Pulleys

### 32 Teeth Sprockets

- 290326** 2007-on BT & 2006 Dyna
- 290324** 1994-06 BT (not 06 Dyna)
- 290320** 1985-93

## 2007-12 Pulleys

### Final Drive Ratios:

Higher final drive gear ratios mean more power! New pulleys need belt lengths checked at time of installation.

- 2007-08** = 2.79 with Stk 32T pulley
- 2007-08** = 2.97 with AP 30T pulley
- 2009-12** = 2.89 with Stk HD 32T pulley
- 2009-12** = 2.97 with AP 31T pulley

## Power Pulleys

Fits all EV80 and Twin 88 5 and 6 speed transmissions.

### 31 Teeth Sprockets (3% more RPM)

- 290316** 2007-on BT & 2006 Dyna
- 290314** 1994-06 BT (not 06 Dyna)
- 290310** 1985-93

### 30 Tooth Sprockets (6% more RPM)

- 290306** 2006 Dyna and all 2007-on
- 290304** 1994-06 BT (not 06 Dyna)
- 290300** 1985-93

### 29 Tooth Sprockets (9% more RPM)

- 290294** 1994-06 BT (not 06 Dyna)
- 290290** 1985-93

## Overdrive Belt Pulleys

### 34 Tooth Sprockets (not for 2009-12 Baggers) (6% less RPM)

(180 RPM drop in engine RPM @ 60 MPH)

#### PCP Application

- 290346** 2007-on BT & 2006 Dyna
- 290344** 1994-06 BT (not 06 Dyna)
- 290340** 1985-93

### 33 Tooth Sprockets (3% less RPM)

- 290334** 1994-06 BT (not 06 Dyna)
- 290330** 1985-93

Andrews sprocket pulleys match 1994 style design. This arrangement has the advantage of 50% longer internal spline length compared to the early design. 1994 style pulleys will fit both early (1985-93) and late transmission shafts. Overall belt drive ratio changes of 3%, 6% or 9% are very noticeable to a rider! **All 1985-93 pulley kits include new style spacer, lock ring, retainer bolts and seals. Pulley kits for 1994-on must use original stock seal and lock ring.**

## Sprocket Tooth Counts & Ratios 1994-2006

(36T clutch-25T engine sprocket, 5 Speeds)

Trans.	R/Wheel	Overall
29	70	3.48
30	70	3.36
31	70	3.25
32 (Stock)	70	3.15
33	70	3.05
34	70	2.96
1995 Softail		
29	65	3.23
30	65	3.12
31	65	3.02
32 (Stock)	65	2.93
33	65	2.83
34	65	2.75

## Sprocket Tooth Counts & Ratios 1985-1993

(37T clutch-24T engine sprocket)

Trans.	R/Wheel	Overall
29	70	3.72
30	70	3.60
31	70	3.48
32 (Stock)	70	3.37
33	70	3.27
34	70	3.17
1993 Softail		
29	61	3.24
30	61	3.13
31	61	3.03
32 (Stock)	61	2.94
33	61	2.85
34	61	2.76

## Belt Drive Sprockets- Installation Notes:

Installing a transmission pulley with more or less teeth than stock requires adjusting the rear axle forward (for more teeth on sprocket) or backwards (for less teeth on sprocket).

**Rear axle position adjustment for each one tooth change on transmission sprocket = +/- .125 inches (3.2mm)**

**Rear axle position adjustment for each one tooth change in belt length = +/- .280 inches (7.1mm)**

If there is not enough axle adjustment at the rear frame, it may be necessary to use a belt with more or less teeth than the stock belt.

# Andrews BT 5-Speed

## 5 Speed Transmission Gears BT

The 5 speed gear box has actually been around for a few years but the growing number of modifications for the EV 1340 has created a lot more interest in it. In addition to close ratio first gears, Andrews Products also makes replacement gears for 1st, 2nd, 3rd, 4th and 5th gears. As with the close 1st gears, all 5 speeds are made from high nickel alloy and heat treated and shot peened to give maximum durability and strength. Also, where applicable, lead-in ramps have been machined into most gears to improve shifting and reduce wear on drive dogs and drive slots.



### 3.24 Stock Ratio 1st Gears

High nickel steel replacement 1st gears with lead-in ramps for quicker, more positive shifting.

**296125** 35025-79 1st main 18T  
**296120** 35622-79A 1st counter 31T

### 2.94 Close Ratio 1st Gear Set

2.94 1st gears provide true close ratio shifting into 2nd. At peak, RPM these gears add 5 mph of usable 1st gear. Made with lead-in ramps for quicker, more positive shifting.

**296110** 2 pieces (1st counter 25T)



### Stock 2nd and 3rd Gears

High nickel steel parts with lead-in ramps for quicker, more positive shifting. All drive edges are shot peened for greater wear resistance.

**296220** 35026-79A 2nd main, 3rd counter, 23T  
**296330** 35027-79A 3rd main, 2nd counter, 27T

### Stock 4th Gears

**296445** 29T 4th main gear, high nickel steel and shot peened with lead in-ramps. Replaces 35028-79.  
**296440** 19T 4th counter gear Replaces 35625-79A (87-on) and also the gear and spacer used in all earlier 5 speeds. Gear also uses high nickel steel material



### Stock Main Drive Gears (Chain Drive)

High nickel steel parts with mainshaft gears made as one piece for maximum strength. Main drive gear also has lead-in ramps for quick positive shifting.

**296550** 35029-79 32T Main drive-chain 80-84  
**296555** 35626-79A 17T Counter drive gear 79-06

### Stock Main Drive Gears (Belt Drive)

High nickel steel parts for maximum strength. Main drive gear also has lead-in ramps for quick positive shifting.

**296585** 35029-85 32T Main drive-belt 85-90  
**296591** 35029-91 32T Main drive-belt 91-06  
**296555** 35626-79A 17T Counter drive gear 79-06

# Andrews 5 Speed

## Complete 5 Speed Gear Sets

Transmission gear sets for 5 speed EV80 bikes are available as complete kits.

Each kit includes the following parts:

- First gears main & counter 2 pcs
- Second gears (counter and main) 2 pcs
- Third gears (counter and main) 2 pcs
- Fourth gears (counter and main) 2 pcs
- Fifth gears (counter and main) 2 pcs
- Countershaft 1 pce
- Mainshaft 1 pce

### Close Ratio (2:94.1)

- 296085** Belt drive 1985-89
- 296090** Belt drive 1990 only
- 296091** Belt drive 1991-06



## Andrews BT 5 Speed Trans Gear Sets

- PCP Stock Ratio**
- 296086** 3.24 1985-89
  - 296092** 3.24 1990
  - 296093** 3.24 1991-06



## BT 5 Speed Transmission Shafts

Replacement trans shafts are made from high nickel steel with aircraft quality heat treatments.

- 296850** 35042-85 Belt drive mainshaft 1985-89
- 296900** 35042-90 Belt drive mainshaft 1990
- 296910** 35042-91 Belt drive mainshaft 1991-06
- 296700** 35632-79 Countershaft all 1979-06



## Calculating Internal Transmission Gear Ratios

Since we get many questions regarding transmission gear ratios, a table of values for EV-80 transmissions is shown below along with an explanation of how the actual numbers are determined. The internal ratio (in any gear) is a combination of the speed gear ratio and the main drive gear ratio. The numbers below are the numbers of teeth on each matching pair of gears.

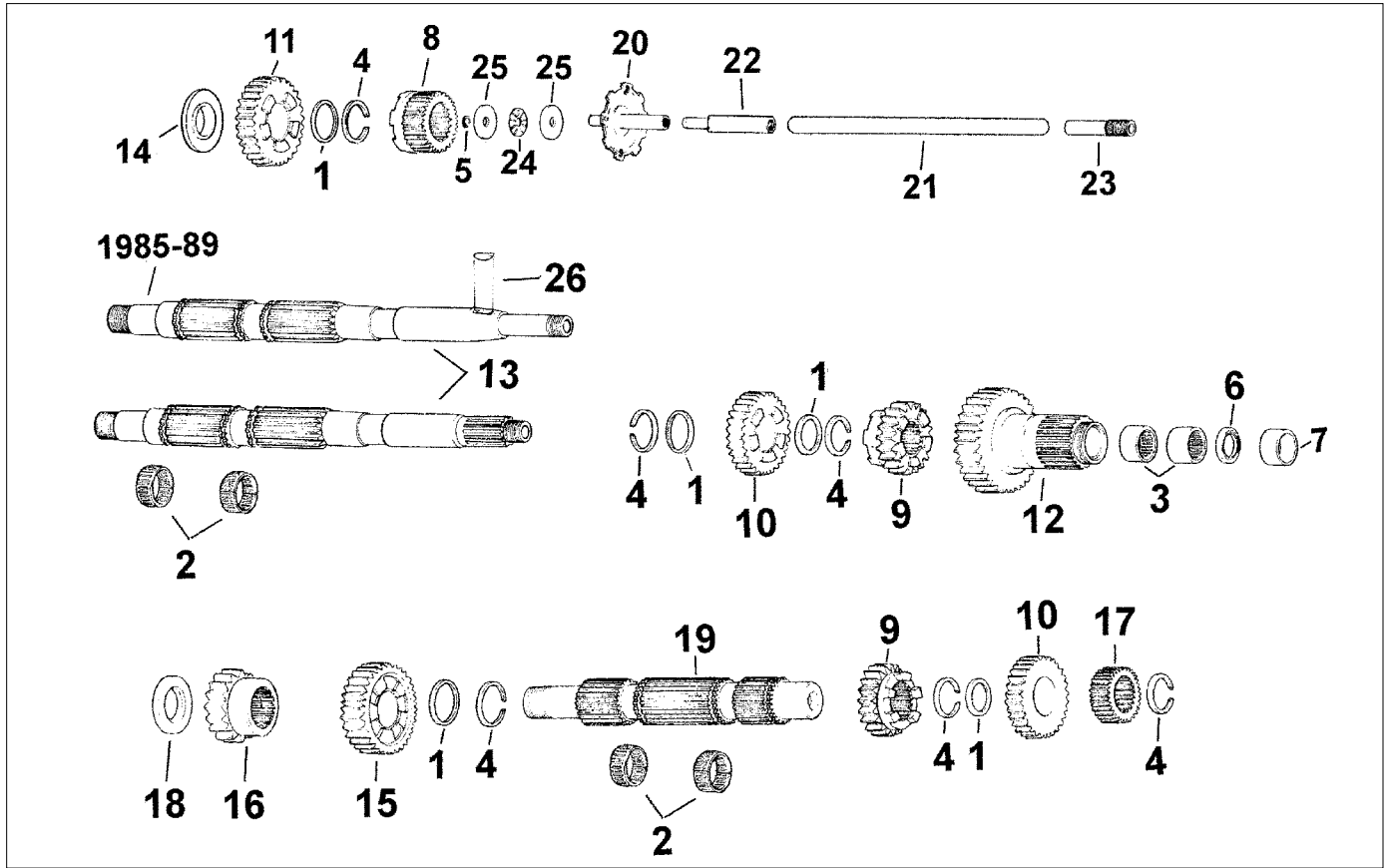
Gear	Main Drive	Speed Gear	Overall Ratio	5 RPM Drop	MPH per 1000 RPM
1 Stk	32/17	31/18	3.24	32	6.81
1 Close	32/17	25/16	2.94	25	7.50
2	32/17	27/23	2.21	27	9.99
3	32/17	23/27	1.60	23	13.79
4	32/17	19/29	1.23	19	17.94
5	32/17	Direct drive	1.00	----	22.07

To calculate the internal gear ratio in 2nd gear for example, multiply 32/17 by 27/23= 32/17 x 27/23= 2.21

To calculate mph per 1000 engine RPM: (assuming a 25" diameter rear wheel and a stock 3.37 final drive ratio);  
 $(25 \times 3.14159) / 12 \times (1000 / (3.37 \times 60)) \times (3.0 / 4.4) = 22.07$  mph per 1000 engine RPM (in 5th gear)

To calculate MPH per 1000 engine RPM in 3rd gear: Divide 22.07 by 1.60  
 $(22.07 / 1.60) = 13.8$  mph per 1000 engine RPM (in 3rd gear)

# BT 5 Speed 1980-06

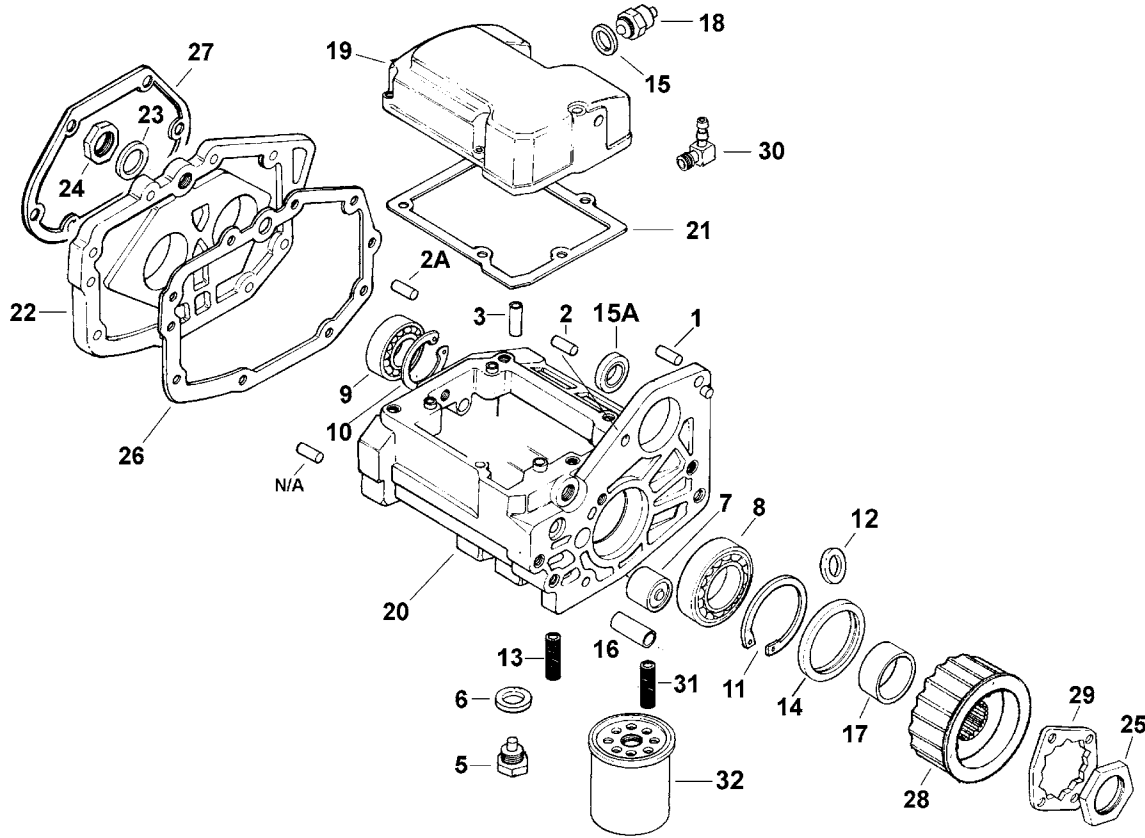


## Big Twin 5 Speed Gears 1980-06

#	PCP	OEM	Description	#	PCP	OEM	Description	
1	18000	6003	Thrust washer (5 pk)	14	11515	35064-79	Spacer, mainshaft	
2	15600	8876A	Bearing	15	296120	35622-79C	1st Gear countershaft	
3	15602	8904	5th Gear bearing 1980-90	16	36018	35625-79B	4th Gear countershaft FXST, Dyna to 1995	
		15626	35051-89			36019*	35625-94	4th Gear countershaft FLT 95-06, FXST 1996-06
4	11031	11067	Retaining ring (10 pk)	17	36020	35626-79B	5th Gear countershaft FXST, Dyna to 1995	
5	11034	11096	Retaining ring (10 pk)	17A	11517	35628-79	Spacer 1980-86 only	
6	14011	12013A	Oil seal 1985-90 metal OD (5 pk)	18	11516	35629-79	Spacer	
	79060		As above, James (5 pk)	19	36022	35632-79	Countershaft	
	14095	12035A	Oil seal, m/shaft 5th 1991-06 (5)	20	16559	37069-90	Pushrod end 1991-11	
7	18711	34090-84	Inner bearing race L84-85 FXST, 1985-86 FXWG, FXSB, FXEF	21	16544	37088-79	Pushrod 1980-E84	
	11522	34091-85	Inner bearing race 1985-06		16547	37088-84	Pushrod L1984	
8	31316	35025-79B	1st Gear mainshaft 1979-06		16550	37088-85	Pushrod 1985-86	
9	N/A*	35026-94	Gear, m/shaft 2nd, c/shaft 3rd FLT 1995-on, FXST 1996-06		16551	37088-87	Pushrod 1987-89	
10	36007*	35027-94	Gear, m/shaft 3rd, c/shaft 2nd FLT 1995-on, FXST 1996-06		16558	37088-90	Pushrod 1990-06	
11	31323	35028-79B	4th Gear, mainshaft FXST, Dyna to 1995	22	16543	37089-79	Pushrod right side 1980-E84	
	36009*	35028-94	4th Gear mainshaft FLT 1995-on, FXST 1996-06		16546	37089-84	Pushrod L1984-89	
12	296585	35029-85	5th Gear mainshaft BT 85-90	23	16545	37090-79	Pushrod, left side 1980-E84	
	296591	35029-91	5th Gear mainshaft BT 91-06		16548	37090-84A	Pushrod end, left side L84-90	
13	296850	35042-85	Mainshaft 1985-89 (Andrews)		16560	37090-84A	Pushrod 1990-97	
	296900	35042-90	Mainshaft 1990 (Andrews)		16561		Pushrod 1998-06	
	296910	35042-91	Mainshaft 1991-06 (Andrews)	24	15618	37312-75	Bearing 1975-84	
	36016	35042-91	Mainshaft 1991-06 (Eastern)	25	11518	37313-80	Thrust washer (5 pack)	
	36189	35042-91	Mainshaft 1991-06 (Preston)	26	10311	37523-85	Key, m/shaft clutch 85-89 (10 pk)	

\*High Contact Gears can only be used with a matching gear

# BT 5 Speed Housing 1987-06



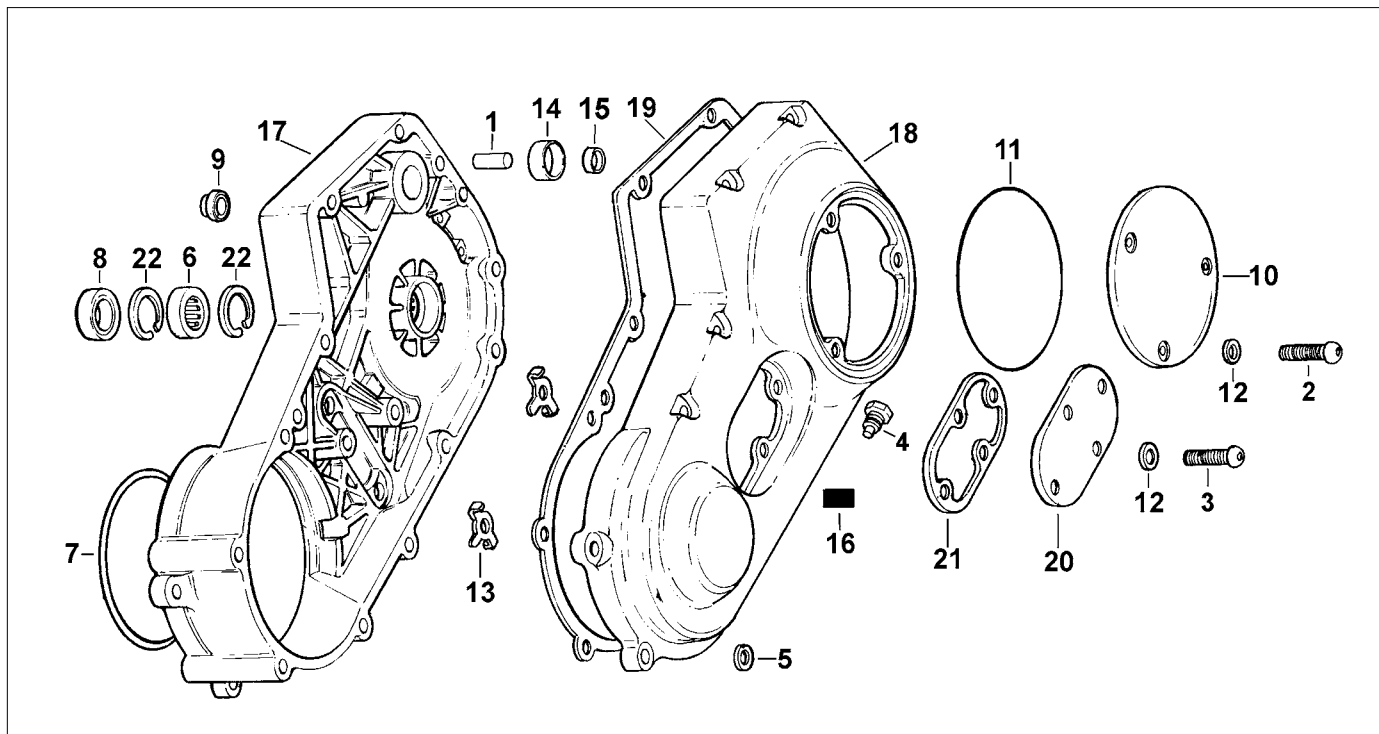
## 5 Spd Trans Housing FLT, FXR, & FXST 87-06

For more specific model fitment consult an OEM parts manual.

**Sold each unless package quantity noted.**

#	PCP	OEM	Description	#	PCP	OEM	Description
1	10107	335	Dowel pin (5 pk) 1987-88	18	289	33900-59C	Switch, neutral indicator
	10109	337	Dowel pin (10 pk) 1987-92 all	19	45511	34468-86A	Chrome cover 1987-99 Softail FLHTC/U 1995-97
2	10113	375	Dowel pin 87-94 all, -96 softail (10)	20	36805	34730-88	Housing FLT, FXR 1988
3	10119	609	Pin 1987-on (10 pk)		36806	34730-89C	Housing FLHS 89-91, FXR 89-93
5	10616	722A	Plug 1987-92 FLT, 1987-94 FXR	21	25126	34904-86	Upper cover gasket (10 pk)
	10613	739A	Magnetic plug 1993-on Softail		79336		As above, James (10 pk)
6	16300	6007	Washer FLT 87-92, FXR 87-94 (10)	22	N/A	35251-93C	Bearing housing, silver 93-07 FLHT
7	15605	8977	Needle Bearing 1987-06 all, FXST/FXR 1993-on	23	11539	35076-79	Spacer 1979-on all (10 pk)
8	15707	8996A	Ball bearing, mainshaft, left side 1987-06 all, FXST 1993-96	24	12553	35078-79	Nut, m/shaft & c/shaft all (pr)
9	15708	8998	Ball bearing 1987-99	25	12554	35211-36	Nut, sprocket 1936-90 all
	15745	8992A	Bearing, trap door 2000-06		12602	35211-91A	Sprocket lock nut 1991-06 all
10	11014	11020	Retaining ring 1987-93 all (10 pk)	26	79355	35652-79A	Gasket, bearing housing 1979-98 (10)
	11108	35021-89	Retaining ring 1994-98 all (10 pk)		79573	35653-98A	Gasket, bearing housing 1999-on (5)
	11118	35087-99A	Retaining ring, bearing 2007 FLT	27	79360	36801-87C	Gasket, right side cover (10 pk)
11	11040	11161	Retaining ring 1987-92 all, FXST/FXR 1993-on		79361		James, as above w/silicone (5 pk)
	11000	10998	Retaining ring 2007 FLT (5 pk)	28	37220	40210-85D	32T Belt pulley 1985-E94, alloy
12	14528	11165	Quad seal 1987-04 (10 pk)		37224	40250-94B	32T Belt pulley L1994-06 all (PCP)
	79039		As above, James (25 pk)		290324		Andrews, 32T Belt pulley L94-06 all
13	10806	11733A	Stud FXST 1987-on		76409		BDL, 32T Belt pulley L1994-06 all
14	14021	12050	Oil seal, mainshaft left side, 87-92 FLT, 87-E94 FXST/FXR	29	13741	40251-92	Pulley lock plate 1992-on all
	79508	12067A	Oil seal m/s left side 95-06 (ea)	30	10521	62375-57	Fitting, upper cover
15	79310	33043-80	Washer, neutral switch (10 pk)	31	10051	26352-95A	Fitting, filter brkt. 1985-on (each)
15A	14022	12051	Oil seal, trans-starter 84-89 (5 pk)	32	2500	63796-77A	Chrome oil filter FXST 1987-on
16	11537	33114-79	Spacer 87-92 all, FXST/FXR 93-on		3841	63806-80T	Black oil filter as above
17	11538	33334-85	Sprocket spacer 1987-E94 all				
	18006	33344-94	Sprocket spacer L1994-on all				

# BT Housing 1980-86

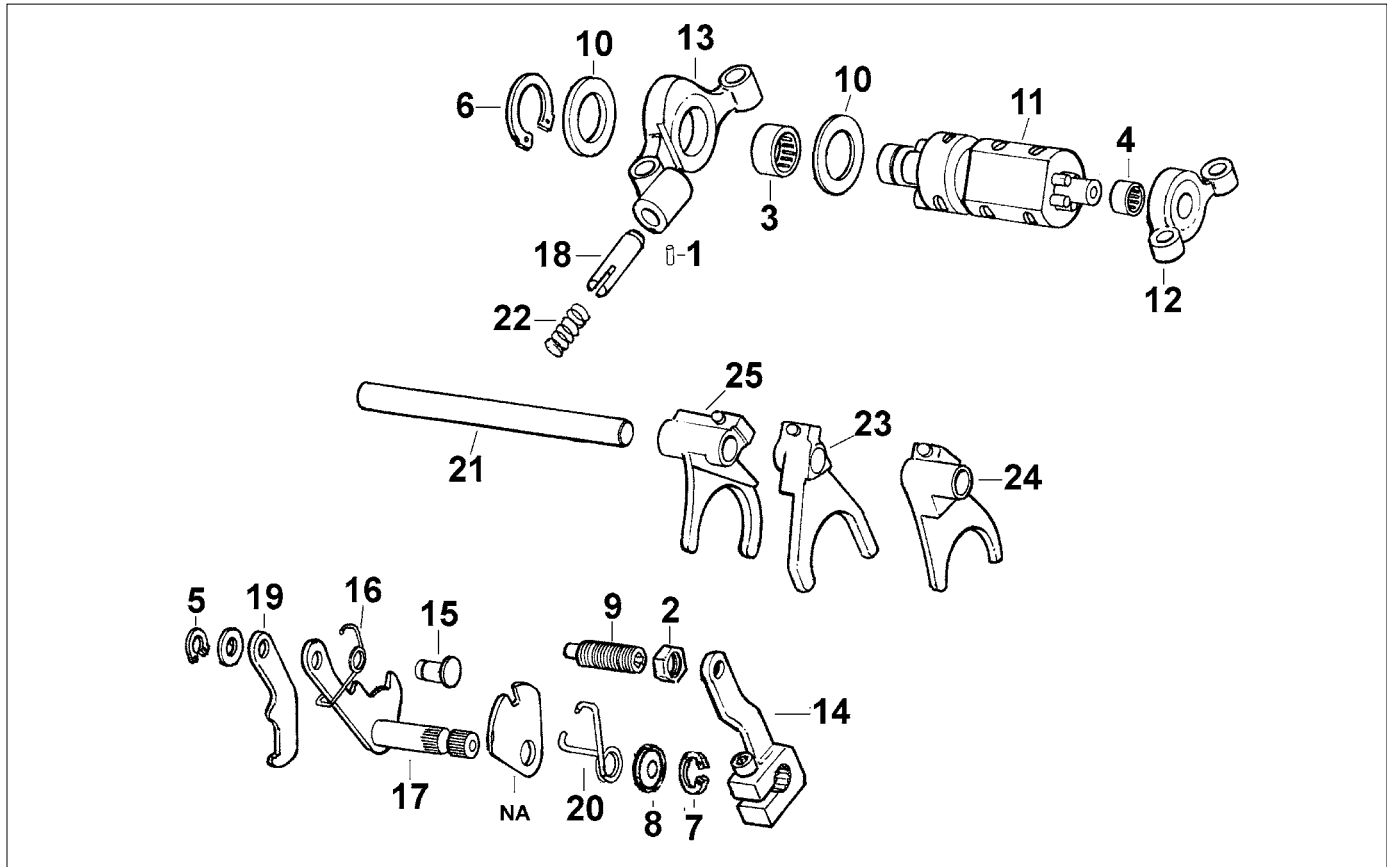


## Transmission 5 Speed Housing 1980-86

Sold each unless package quantity noted.

#	PCP	OEM	Description	#	PCP	OEM	Description
1	10113	375	Dowel pin (10 pk)	16	79310	33043-80	Gasket, neutral switch, 80-on all (10)
2	10119	609	Pin (10 pk)	17	11537	33114-79	Spacer
3	10616	722A	Magnetic drain plug	18	3621	33336-83	22T Sprocket 80-85
4	16300	6007	Nylon washer (10 pk)		3622		23T Sprocket
5	15602	8904	Needle bearing main gear 1980-86		3623		24T Sprocket
6	15605	8977	Needle bearing 1980-E84	19	31091	33334-79	Spacer, sprocket 80-84
7	15706	8978	Ball bearing 80-E84	20	13717	33335-79	Lockwasher, sprocket 80-83 (5 pk)
	15707	8996	Ball bearing L84-86	21	289	33900-59	Neutral switch
8	15708	8998	Ball bearing	22	4340	34466-82	Chrome upper cover 82-86
9	11014	11020	Retaining ring (10 pk)	23	79335	34904-79	Gasket, upper cover 79-85 (10 pk)
10	11028	11057	Retaining ring 80-E84	24	296550	35029-79	Andrews main gear 1980-E84
	11040	11161	Retaining ring L84-on	26	11539	35076-79	Spacer (10 pk)
11	14527	11162	O-ring m/shaft right side 1982-86 (10)	27	12553	35078-79	Nut, mainshaft & countershaft (pr)
12	14011	12013A	Seal, main drive gear 1985-90 (5 pk)	28	12554	35211-36	Nut, sprocket
	79060	12013A	As above James (5 pk)	29	79355	35652-79	James bearing housing gasket (10)
13	14017	12043	Seal, starter shaft 1980-E84 (5 pk)				
	79073	12043	As above, James 1980-86 (5 pk)				
	14022	12051	Seal, starter shaft L 1984-88 (5 pk)				
14	14018	12044A	Oil seal mainshaft 80-E84				
	79075	12044-A	As above, James (each)				
	14021	12050	Oil seal mainshaft L84-E94				
15	10520	26338-68	Fitting, oil filter hose 80-92 (5 pk)				

# BT Shifter 1980-00



## Big Twin 5 Speed Gear Shifter 1980-06

Sold each unless package quantity noted.

#	PCP	OEM	Description	#	PCP	OEM	Description
1	10103	601	Roll pin (10 pk)	12	37106	33326-79A	Support, left shifter cam
2	12501	7515	Jam nut (10 pk)	13	37112	33332-79	Support, right shifter cam
3	N/A	9114	Needle bearing	14	36153	33715-85A	Lever, shifter rod 1985-96
4	15628	9115	Needle bearing	15	10136	34082-79	Pin, shifter shaft lever
5	11011	11016	Retaining ring (10 pk)	16	13179	34083-79	Spring, shifter shaft lever
6	11032	11083	Retaining ring (10 pk)	17	37154	34084-86A	Lever, shifter shaft 1986-00
7	11036	11150	Retaining ring (10 pk)	18	37115	34085-79A	Cam follower 1980-00
8	14019	12045	Seal (5 pk)	19	37117	34086-79	Pawl, shifter cam 1980-00
9	37150	33119-79B	Adjusting screw, shifter arm	20	13180	34087-79A	Spring, shifter shaft 1980-00
10	11580	33205-80	Thrust washer .017 (5 pk)	21	36136	34088-79	Shaft, shifter fork 1980-86
	11581	33206-80	As above, .020 (5 pk)		37200	34088-87	Shaft, shifter fork 1987-06
	11582	33207-80	As above, .022 (5 pk)	22	13181	34089-79	Spring (5 pk)
	11583	33208-80	As above, .025 (5 pk)	23	37151	34191-79E	Shifter fork 1980-06
	11584	33209-80	As above, .028 (5 pk)	24	37152	34193-79E	Shifter fork 1980-06
	11585	33210-80	As above, .031 (5 pk)		37139	34193-79E	Shifter fork 1979-06
	11586	33211-80	As above, .035 (5 pk)	25	37153	34195-79D	Shifter fork 1980-06
	11587	33212-80	As above, .039 (5 pk)				
	11588		Assortment of 8 pcs.				
11	N/A	33320-79D	Shifter cam 1980-97				

## BT Transmission Shift Pawl Assembly

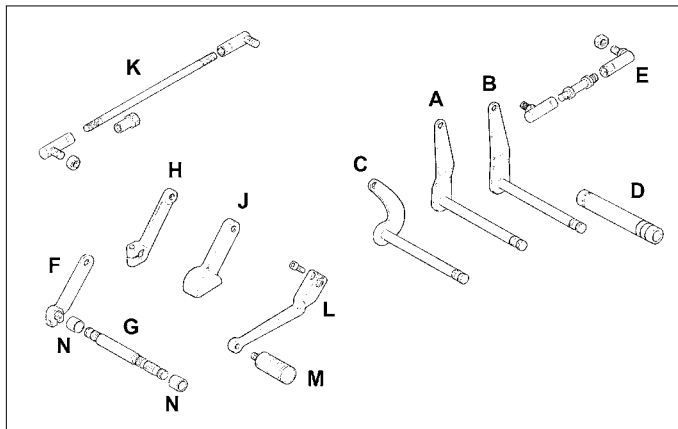
Includes shift shaft with lever, pin, shaft springs and pawl.

### PCP Application

37157	86-01 Softail, 86-00 FLT, FXD (34084-86A)
31046	86-01 Softail, 86-00 FLT, FXD, JIMS
36040	02-06 BT 5 speed (34972-02)
36041	06-on FXST 6 speed (35081-06)



# Big Twin 5-Speed



## Inner Shifter Levers-5 Speed

These are splined and fit through the primary cover on 82-88 FXR models, 80-on FLT models have linkage on front primary cover.

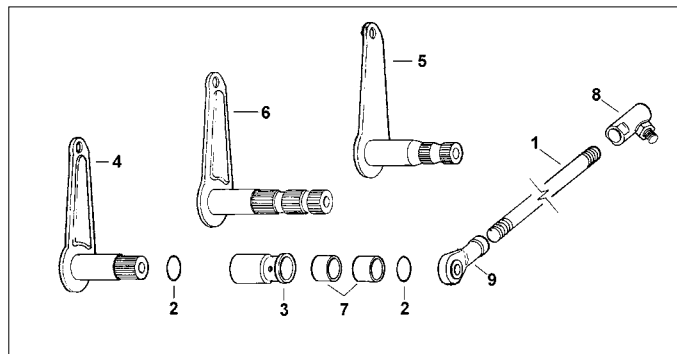
PCP	OEM	#	Year/Model	Item
3094	34621-84	C	L1984-94 FXR	Lever, chrome
18556	34632-84	D	1984-on FXR	Bushing
37213	33728-82A	E	1982-94 FXR	Ball Joint, chrome
37215			1982-94 FXR	Left hand end
36132	33718-82	F	1982-on FLT	Chrome Lever
36130	33709-82	G	1982-on FLT	Shaft Only
36153	33715-85A	H	1985-06 FLT	Lever, chrome
45024	Chrome	J	1985-on FLT	Cover
36133	33719-79A	K	1980-on FLT 2001-* ST	Chrome Rod Kit, with ends
37518	34564-90A	L	91-on FXD/WG	Chrome shift lever
37515	33640-83		1982-99 FLT/ST	Chr outer lever
37516	33895-82A		1986-92 FLST	Outer shifter arm
1147	34611-65	M	All	Black shift rubber
18623	33713-85	N	1985-00 FLT	Bushing
18625	42642-00	N	2001-08 FLT	Bushing



## E-Z Pull Clutch Assist

Reduces manual effort required to pull the clutch lever by 40%. Mechanism fits inside transmission cover on Big Twins and the primary on Sportsters. It extends the clutch operating mechanism for improved leverage.

36125	BT 87-05 and FXR 87-94
36129	Sportster 5 speed 1991-93
36185	BT 2000-12



## FXST, FLST Shifter Parts 1985-on 5 Speed

#	PCP	OEM	Description	Year	U/M
1	10804	11729	Cad plated rod	87-99	Each
	37211	11729	Chrome plated rod	87-99	Each
2	14562	11191	O-Ring	90-08	10 Pk
3	18611	33638-70	Bushing	85-93	Each
	18635	33708-94	Bushing	94-08	Each
4	37204	33660-85A	Chrome lever FXST	85-89	Each
5	37205	33660-90	As above, USA	90-06	Each
	37161		As above, Preston	90-06	Each
6	37207	33668-90A	Chrome lever FLST/C	90-06	Each
7	18635	33708-94	Bushing all FXST	94-08	Each
8	37209	33729-82	Chrome ball joint	86-96	Each
	37225		Raw ball joint	86-96	Each
9	37208	33871-85	Chrome swivel end	85-*	Each



## Chrome FXST and Dyna Shift Linkage 1986-on

Includes Transmission Arm Cover, Rod, 2 Swivel ends, and Nuts. Arm Cover and Rod Kit also available separately.

PCP	Description
36137	Rod kit with cover
37210	Rod kit only
45024	Arm cover only



## Chrome Shift Rod Kit FXR 1982-94

37213	33728-82A
37215	Left hand end only, for 5/16 x 24 threaded rod



# BT 5 Speed Shifter



**Chrome FLT Shift Linkage Kit 1985-on**  
Kit includes arms, rods and swivel ends.  
**36177**



**Chrome Shifter Arm and Linkage Kit**  
Includes inner arm, inner shifter lever, and rod with ball and swivel ends.  
**36175** FXST 1986-on  
**36176** FLST 1990-on



**Chrome Shift Linkage Kit**  
Kit replaces original shift linkage on 2000-on Softail models and 1980-on FLT models.  
**36178** 33814-98A



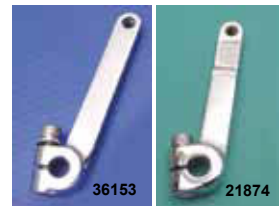
**Billet BT Shift Arm**  
Fits 5 and 6 speed BT transmissions.  
**21779**



**FXDWG Shift Rod Kit 1991-05**  
**36179** Chrome  
**36180** Zinc

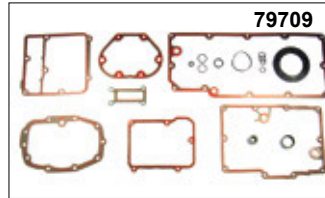
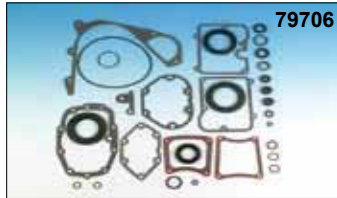
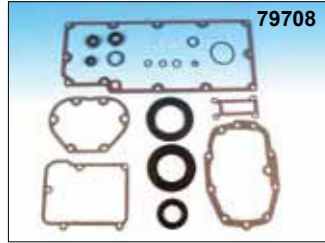
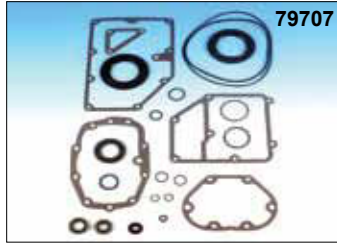
**BT Steel Inner Shifter Lever**

PCP	Fits	Finish
<b>36153</b>	5 Spd 1985-96	Chrome
<b>21874</b>	6 Spd	Chrome



**Shift Rod Jam Nuts**  
Features tapered design to cover excess rod thread. Pairs.  
**12653** 5/16 x 24

# Gaskets

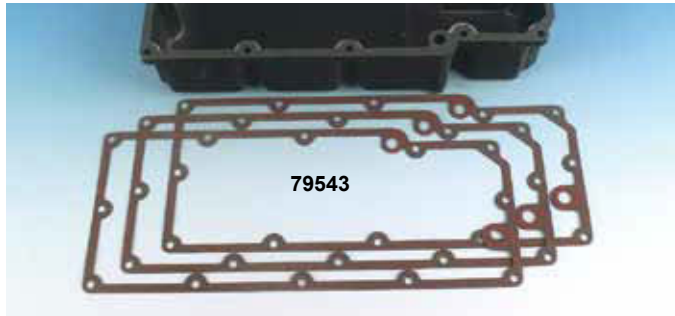
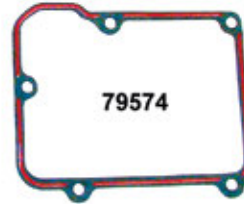
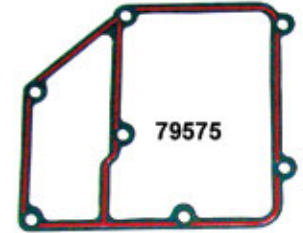


## James BT Trans 5 Speed Gasket Kits

Genuine James Transmission gasket kits contain gaskets and oil seals.

### PCP Application

- 79706** 1980-99 FXST (w/o oil pan) (33031-85)
- 79707** 1991-98 Dyna (33031-91)
- 79708** 1993-98 FLT, FLHS (33031-93)
- 79709** 1999-06 FLT w/bead (33031-99)



## James BT 5 Speed Trans Paper Gaskets

### PCP Application

- 79324** Top cover FL, FXST L79-86 4 speed (34824-79) (10)
- 79575** Dyna 1991-98 w/bead 1 side (34917-90-X) (5pk)
- 79572** Top cover Dyna 1999-05 bead 1 side(34917-99B) (5 pk)
- 79335** FLT, FXR 1979-85 (34904-79) (10 pk)
- 79336** FLT FXR 1986-03 (34904-86) (10 pk)
- 79574** FLT FXR 1986-03 w/bead 1 side (5 pk)
- 79355** Bearing cover FLT, FXR, Softail Dyna 1979-98 (35652-79-A) (10 pk)
- 79576** Bearing cover w/bead all 1979-98 (35652-79-X) (5 pk)
- 79573** Bearing cover w/bead 1999-06 (35653-98) (5 pk)
- 79358** Clutch release cover 1979-86 (36801-79) (10 pk)
- 79577** As above w/bead 1979-86 (36801-79-X) (5 pk)
- 79360** Clutch release cover all 87-06 (36801-87-A) (10 pk)
- 79361** As above w/bead 2 sides (36801-87-X) (5 pk)

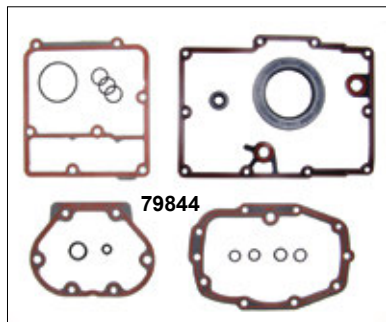
## James BT Paper Oil Pan Trans Gasket

5 speed oil pan transmission housing gasket .

- 79295** FLT 1993-98 w/bead 1 side (26077-93) (10 pk)
- 79543** FLT 1999-09 TC w/bead 1 side (26077-99) (10 pk)
- 79294** Dyna 1991-98 (paper) (26072-90) (10 pk)
- 79556** Dyna 1991-98 w/bead, 1 side (26072-90X) (5 pk)
- 79570** Dyna 1999-08 w/bead, 1 side (26072-99A) (5 pk)
- 79588** Dyna 1999-08 RCM w/bead (26072-99X) (each)



## James 6 Speed Transmission Gaskets



PCP	OEM	Description	Fitment	U/M
<b>79603</b>	35147-03-F	Bearing cover, foamet	S/E 6 Speeds 2003-09	Each
<b>79604</b>	35147-03-X	Bearing cover RCM with bead	S/E 6 Speeds 2003-09	Each
<b>79605</b>	35148-03-F	Release cover, foamet	S/E 6 Speeds 2003-09	5 Pk
<b>79606</b>	35654-06-X	Bearing cover RCM with bead	FXST, Touring 2007-09 Dyna 2006-09	Each
<b>79844</b>	33031-05	Transmission gasket and seal kit	Dyna 2001-06 6 Speed	Kit
<b>79845</b>	33031-06	Transmission gasket and seal kit	Dyna 2006-09 6 Speed	Kit
<b>79846</b>	33031-07	Transmission gasket and seal kit	Touring 2007-08	Kit

# Oil Seals



## Big Twin Trans Oil Seal Kits

- 79835** Trans sprocket kit for 1984-94 FLT, FXR, Dyna, and Softail (12050-K)  
**79513** Trans oil seal kit 1995-06 FLT, FXR, Softail and 1994-05 Dyna (12067-AK)  
**79840** M/shaft L/S Dyna 2006-09 (12074-K)



## 5 Speed Main Drive Gear Oil Seal & Spacer Kit

Big Twin kit features three lip seal and coated sprocket spacer. The coating provides superior surface lubricity and increased corrosion resistance. Fits 1994-06 as a replacement or for a ratio change on earlier models with late pulley.

**15952**



## Magnetic Drain Plugs

PCP	Size	Use
<b>10610</b>	3/8 x 24	BT Case plug (700 not magnetic)
<b>10611</b>	1/2 x 13	74 & XL Trans (707)
<b>10615</b>	1/4 x 18	NPT chain cover (718)
<b>10612</b>	5/8 x 18	Oil tank & time hole (720)
<b>10616</b>	5/8 x 18	FXR drain (722A)
<b>10613</b>	1/8 x 27	NPT 1987-89 BT primary trans FXST-FXR (734, 739A)
<b>10619</b>	1/8 x 27	NPT 1990-03 BT trans (739A)
<b>10618</b>	1/2 x 20	74 & 80 Inner primary (60348-65A)

Prevents metal particles from circulating through engine and transmission cases, oil tanks, etc.



## Big Twin Trans Oil Seal

James PCP

- 79487** FLT 1985-90 rubber OD (12013) (5 pk)  
**79060 14011** FLT 1985-90 metal OD (12013-A) (5 pk)  
**79061 14012** FL, FLH, FLT, FX, FXR 65-90 (12014) (5 pk)  
**79070 14095** FLT, FXR, Softail, Dyna 91-on (5 pk) (12035-B)  
**79073 14017** FLT, FXR, FXRS 1980-86 (5 pk) (12043)  
**79074 -** FLT, FXR, FXRS 1980-86 (5 pk) (12043-A)  
**79077 14019** FLT, FXR, Softail, Dyna 80-06 (5 pk) (12045-DL) (rubber OD)  
**79491** As above w/metal OD (12045m) (5 pk)  
**79080 14021** FLT, FXR, Softail, Dyna 1984-E94 and XL 1991-94 (ea) (12050)  
**79081 14022** FLT, FXR, Softail 84-89 (5 pk) (12051)  
**79082 14024** FLT, FXR, Softail, Dyna 1984-04 (5 pk) (12052) (inner primary)  
**79084 -** FLT, FXR, Softail, Dyna 1994-08 (5 pk) (12052-F) (inner primary)  
**79086 14075** FLT, FXR, Softail, Dyna 1989-93 starter shaft (5 pk) (12053-A)  
**79507 14104** FLT, FXR, Softail, Dyna 1994-06 starter shaft (5 pk) (12066-A)  
**79508 14076\*\*** FLT, FXR, Softail, Dyna 1995-06 trans (ea) (12067-A)  
**79066** Dyna 06-09, Touring 07-09 m/shaft L/S (12074) (ea)  
**79068** Dyna 2006-09 input/output shaft (12077) (5 pk)  
**79363** Clutch release lever 1984-86  
**79373** Shifter shaft XL 1986-on (37101-84) (each)  
 Clutch release lever Dyna 2006-09, Touring and FXST 2007-09 (37101-84B) (5)

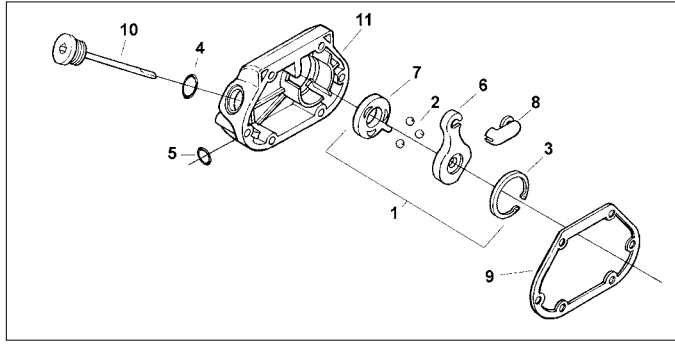
\*\*Note: 5 pack



## Big Twin Misc. Trans Gaskets

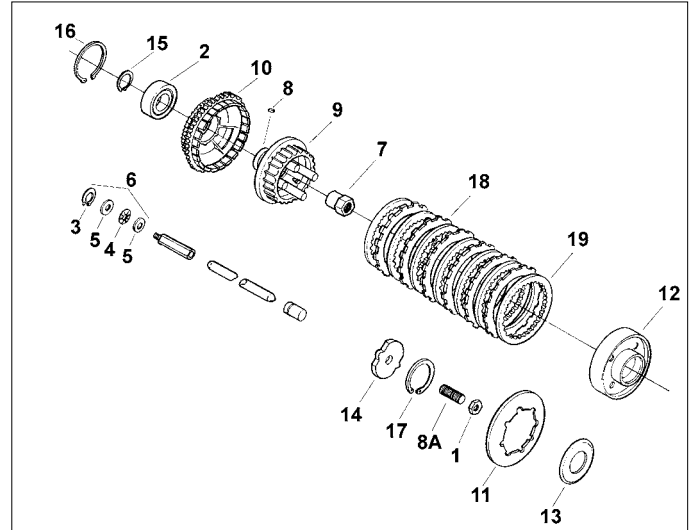
- 79446** Oil spout, paper 1991-98 Dyna FXDB-S (62423-90)  
**79199** Shifter washer, black nylon FXST 1990-09 (6057) (10)  
**79362** Dipstick washer, plastic 1980-86 5 speed (37091-80) (10 pack)  
**79375** Drain plug seal, metal w/rubber 1980-94 BT (6007-X) (6 pack)  
**79453** Oil pan dipstick o-ring 1991-98 Dyna (62672-90) (10)

# BT Clutch 1984-89



## Clutch Release Kit BT 1987-99

#	PCP	OEM	Description	Year	U/M
1	37000	-	Release Kit	87-99	Kit
2	15574	8873	Ball bearing	87-99	10 pk
3	11000	10998	Retainer Ring	87-*	5 pk
4	14516	11132	O-Ring, Filler	87-99	10 pk
5	14536	11179	O-Ring Cable	87-99	10 pk
6	37100	25452-87A	Inner Ramp	87-99	Each
7	37102	25453-87A	Outer Ramp	87-99	Each
8	37104	34920-86	Coupling	87-99	Each
9	79360	36801-87B	Gasket	87-06	10 pk
10	37105	37075-87	Chromed Plug	87-06	Each
11	45508	37105-87A	Chrome Cover	87-06	Each
12	8909	--	Allen Bolts FX, FL FXST	87-06	Kit
	8913	--	Cap Screws	87-06	Kit



## L1984-89 BT Clutch Parts

#	PCP	OEM	Description	U/M
1	12509	7848W	Lock Nut, Sprocket	5 pk
2	15716	9025A	Bearing	Each
3	11034	11096	Retaining ring	10 pk
4	15618	37312-75	Bearing	Each
5	11518	37313-80	Thrust washer	5 pk
6	4342		#3,4,5	Kit
7	12558	37496-84	Nut, Clutch hub	Each
8	10311	37523-85	Key 1985-89	10 pk
8A	10907	37537-84	Adjusting stud	Each
9	37230	37550-84A	Hub, Steel 84-90	Each
10	37227	37702-84A	Clutch shell 1984-E85	Each
	37228	37707-84A	Clutch shell L1985-84	Each
11	38917	37875-86A	Diaphragm spring	Each
12	37110	37901-84A	Pressure Plate	Each
13	37113	37902-86B	Adj. Plate (USA)	Each
14	37116	37903-84	Release Plate	Each
15	11076	37904-84	External Ring	5 pk
16	11006	11006	Internal Ring 1986-on	5 pk
17	11080	37907-84	Retaining Ring	10 pk
18	38976	HDP-9K	Friction Plates (Barnett)	Set
19	38907	37975-84	Drive Plate (Barnett)	Each



## 1985-90 Clutch Hub Sleeve

A reinforcement ring for hubs at the tapered end. Sleeve is pressed on with beveled side out toward inner primary, after clutch drum with bearing is set over hub, so that clutch drum and hub will be installed as one unit. Available in 2 sizes to fit OEM hubs (1) 37550-84 (2) 37550-84A. These will NOT repair a cracked hub.

**16565** (1) Silver (sold each)

**16566** (2) Gold (sold each)

**Note:** 16565 fits aluminum one-piece type hub (37550-84)  
16566 fits steel two-piece type hub (37550-84A)



## Clutch Adjuster Plate BT 1985-89

Fits FXST 1985-89, FLST 1986-89, FLT 1985-89 and FXR 1985-89 Replaces OEM 37902-86B

37113



## Clutch Hub Kit BT 1985-89

Includes updated reinforced steel center clutch hub, steel drive plate set & friction plate set.  
**59608**

# BT Clutch Pack



## BT 5-Speed Builder's Kits

PCP	Description
37162	Internal small parts kit BT 79-06, FXD 91-05
37163	Shift shaft drum assembly 1979-97

## BT Clutch Pack Assembly 5 Speeds.

Features stock style components for a complete installation.

PCP	Fit
90101	1984
90105	1985-90
59303	91-93
90130	1994-97
90133	1998-06
59317	2007-10
59325	2011-on



## Clutch Shell with 36T Sprocket BT 1998-06

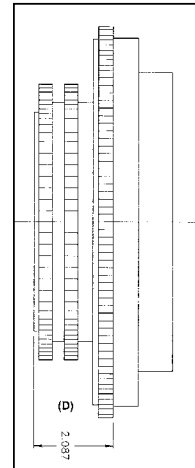
With 102T ring gear.

37236 FLHT/C, FLHR, FLTRI (37707-98A)

## Clutch Shell/Sprocket BT 2011-\*

37246 Drum FLT, FLST, FXD, FXST

15743 Clutch hub bearing only (37906-11)



## BT Clutch Drum and Hub Assembly

Bearing and snap ring are installed in drum. Starter ring gear dimensions shown.

PCP	Year	Offset (D)
37244	1984-E85	1.670
37245	L1985-90	2.087

# BT Clutch 1990-97



## BT Evo Clutch Hub 1990-97

Replacement inner clutch hub on Big Twin Evo models 90-97.  
Replaces OEM 37550-90A.  
37231 Preston



## Clutch Pressure Plate BT 1990-97, XL 1991-15

71035 Preston (37912-91A)  
38900 Barnett as above



## Clutch Hub

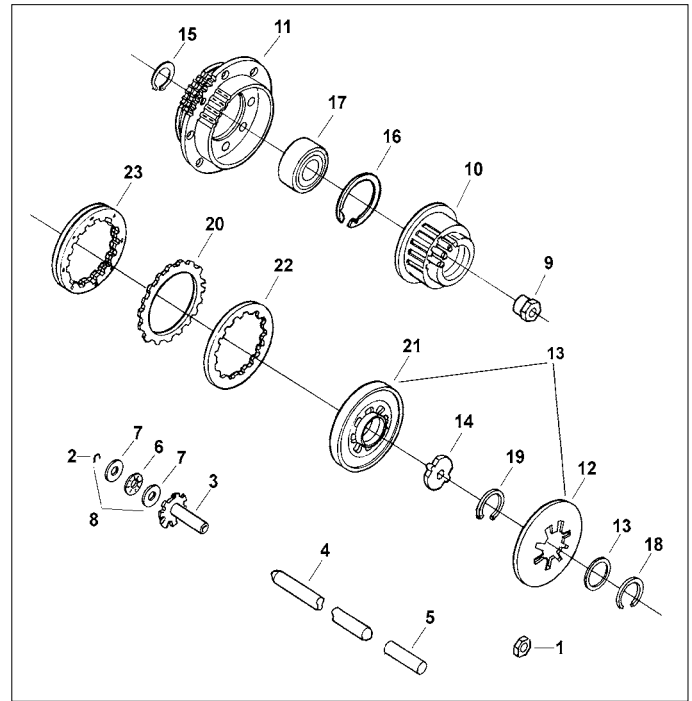
PCP	Year
37234	1998-06
65402	2007-10



15755



15756



## 1990-97 Big Twin Clutch Parts

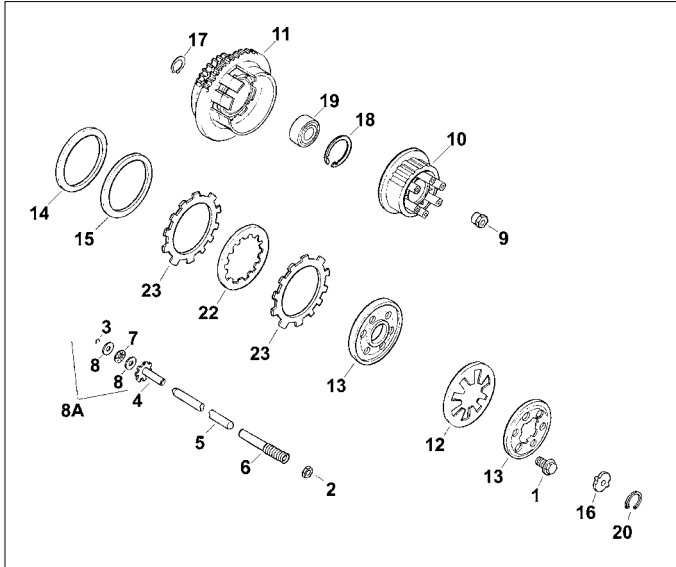
#	PCP	OEM	Item
1	12509	7848W	Locknut 1990-on(5 pk)
2	11034	11096	Retaining Ring 1990-on(10 pk)
3	16559	37069-90	Push Rod End 91-on
4	16558	37088-90	Push Rod, Release 1990-97
5	16560	37090-84A	End, Rod, Left 1990-97
6	15618	37312-75	Bearing only
7	11518	37313-80	Thrust Washer (5 pk)
8	4342		Kit (2,6,7)
9	12559	37496-90	Mainshaft nut
10	37231	37550-90A	Clutch hub 66T 1990-97
11	37232	37707-90	Clutch drum w/gear 90-93
	37233	37707-94	Clutch drum 94-97 102T
12	38919	37871-90	Diaphragm Spring
	38005		Preston as above
13	62107	37872-90	Spring Seat
14	62108	37903-90	Release Plate
15	11077	37904-90	Retaining Ring, External
16	11079	37905-90	Retaining Ring, Internal
17	15732	37906-90	Bearing 1990-10
18	11081	37908-90	Retaining Ring, External
19	11082	37909-90	Retaining Ring, Internal (5 pk)
20	38872	37911-90	Plate Set (8)
21	38900	37912-91	Pressure Plate, Barnett
	71035	37912-91A	Preston, as above
22	38863	37913-90	Steel Plate (each)
23	62110	37977-90	USA Spring Plate, Smooth
	38006		Preston as above

## Sealed Clutch Drum Bearing 1985-on

For belt drive applications on Big Twins.

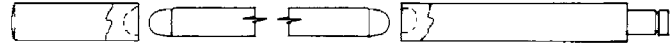
PCP	Years
15755	1985-90
15756	1991-on

# BT Clutch 1998-06



## Big Twin 5 Speed Clutch Parts 1998-on

#	PCP	OEM	Item
1	N/A	2980	Screw (6 pk)
2	12509	7848W	Locknut 86-on (5 pk)
3	11034	11096	Retaining ring 75-on (10 pk)
4	16559	37069-90	Pushrod end 91-06
5	16558	37088-90	Pushrod, release 90-06 (center)
	16523	37092-06	Pushrod release 2006-on
6	16561	37090-98A	End, Rod, Left
7	15618	37312-75	Bearing only
8	11518	37313-80	Thrust washer (5 pk)
8A	4342		Kit (2,6,7)
9	12559	37496-90	M/S Nut
10	37234	37550-98	Clutch hub, 1999-06
	65402	37554-06A	Clutch hub, 2007-10
	37239	37554-11	Clutch hub, 2011-on
11	37236	37707-98A	Clutch shell and sprocket with 36T ring gear 1998-06 (not injected)
	37243	37813-06	Clutch shell 2007-10
	65428	37802-04A	Clutch assembly complete 2004-06
	65420	37846-99A	As above, 102T ring gear and 37T chain gear, EFI 99-01
12	38866	37871-98A	Alto, spring diaphragm 1998-05
	38984		Barnett, as above
	62115	37871-04	Spring, diaphragm 2004-05
	62118	37882-06	Spring, clutch 2006-on Softail
13	37242	37912-98A	Clutch pressure plate 98-10
15	62114	37884-98	Damper spring
16	62108	37903-90	Release plate 90-97
17	11077	37904-90	Retaining ring, external
18	11079	37905-90	Retaining ring, internal 1990-99
	11098	37905-00	As above, internal 2000-on
19	15732	37906-90	Bearing (ball, double row) 90-10
20	11082	37909-90	Retaining ring, Internal (5 pk)
22	38867	37913-98	Alto steel plates 1998-12 (8 pk)
23	38877	37932-98	Alto kevlar friction plate kit (9 pk)



Left (Clutch Side)      Center      Right (Bearing Side)

## Clutch Pushrods for Late Model Big Twins

U.S.A.-made 3-piece clutch pushrods to fit all 5-speed models 1984-on and 4-speed models (with diaphragm clutch) from L1984-86. Each piece is heat-treated where necessary. Sold each and in kits

PCP	OEM	Description	Kit #
<b>All Late 1984 5-speed models</b>			
16546	37089-84	Right end	Kit 16553
16547	37088-84	Centre piece	
16548	37090-84	Left end	
<b>All late 1984-86 4-speed models</b>			
16546	37089-84	Right end	Kit 16554
16549	37285-84	Centre end	
16548	37090-84	Left end	
<b>All 1985-86 5-speed models</b>			
16546	37089-84	Right end	Kit 16555
16550	37088-85	Centre piece	
16548	37090-84	Left end	
<b>All 1987-89 5-speed models</b>			
16546	37089-84	Right end	Kit 16556
16551	37088-87	Centre piece	
16548	37090-84	Left end	
<b>All 1990 5-speed models</b>			
16546	37089-84	Right end 1990-on	Kit 16557
16558	37088-90	Centre 1990-on	
16548	37090-84A	Left end to 1997	
<b>All BT 1991-97</b>			
16559	37069-90	Right side	Kit 16540
16558	37088-90	Centre	
16560	37090-84A	Left side	
<b>All BT 1998-01</b>			
16559	37069-90	Right side	Kit 16541
16558	37088-90	Centre	
16561	37090-98A	Left side	
<b>Bearing Retaining Clip</b>			
11034	11096	Fits all Big Twins L1975-on (10 Pack)	



## 6 Speed Clutch Pushrod Kit 2006-on

Includes right and left ends for 2006-on BT 6 speed clutch.

16542 (37069-90, 37090-98, 37092-06)

# BT Clutch 1987-on



## BT Easy Starter Kits

Improves starting on high compression big inch engines through an improved starter to clutch basket gear ratio. Complete kits include a clutch basket with bearing for BT models with 66T starter ring gear and a 9T starter pinion gear.

PCP	Year
59350	94-97
59351	98-06 BT and 98-05 FXD
73741	9T Pinion gear 94-on (use with 66T ring gear)
65409	66T ring gear



## BT 5 Speed Clutch Release Kit 1987-99

Includes end rod with slinger, bearing, washers and snap ring. Fits Softtail 87-99 and FXS 91-99.

16539



## Starter Ring Gears

For replacement on stock clutch hubs only.

PCP	Description
2819	BT 1965-85 (33163-65B)(weld-on)
65409	BT 1990-93 (66T) Primo (bolt-on)
65410	BT 1994-97 (102T) Primo (bolt-on)
76076	BT 1998-06 (102T) (bolt-on)
59165	FLT-FXST 2007-*, FXD 2006-*
65418	XL L1984-90
65419	XL 1991-on



## Chrome Clutch Handle Assembly 1996-on

Includes mount bracket, clamp and handle. Assembled.

PCP	Model
46015	96-14 Softtail, 96-07 FLT, 96-on FXD, 96-03 XL
46019	08-13 FLT
46031	08-on FLT (38067-08)
59774	04-06 XL
46033	07-13 XL
17292	Clutch neutral switch 96-10 Softtail, 96-09 FLT, 96-11 FXD and 96-13 XL



## Clutch Release Kit 1987-on

For cable direct operated clutch on 5 speed models.

PCP	Application
37000	1987-99 Kit
37001	2000-on Kit
15574	(A) 1987-99 Ball (10 pk) (8873)
11000	(B) 1987-15 Retainer ring (5 pk) (10998)
37100	(C) 1987-99 Inner ramp (25452-87)
37102	(D) 1987-99 Outer ramp (25453-87A)
37104	(E) 1987-99 Coupling (34920-86)
79360	(F) 1987-06 Gasket (36801-87)
79361	(F) 1987-06 Gasket w/silicone

# BT 5 Speed Trans Housing

## Delkron 5 Speed Transmission Case

These quality manufactured cases feature reinforced design for FXST-FLST rigid mount applications 1990-on. Cases listed as door included; have main and countershaft bearings and shifter shaft bushings installed. Available in natural aluminum finish.



36826



36828

## Delkron FXST 5 Speed Case

**PCP**    **Type**  
**36826** Case w/door and bearings 1990-95  
**36828** Case w/door, bearings and electronic speedo pick-up 1994-06



71018



71019

## 5 Speed FXST Transmission Offset Plates

These 1" offset mounting plates for 5 speed Softail transmissions are available raw or with a chrome finish. Use these plates to assemble a wide drive swingarm or extra wide rigid frame custom bike.

**71018** Chrome

**71019** Raw



## 5 Speed Trans Oil Seal

**14076** BT 1995-06 (12067A) (5 pk)



59752



## Sifton Big Billet Trans Doors

Includes pressed-in bearings and appropriate retaining rings.

PCP	Item	Type	Fitment
<b>59752</b>	Complete	5-Speed	1987-99 models
<b>59088</b>	Door only	5-Speed	1987-06 models, polished
<b>59090</b>	Door only*	6-Speed	06-on FXD, 07-on Softail, FLT

\*no hardware



## BT Main Drive Gear Oil Seal & Spacer Kit

Oil seal and spacer fit BT 5 speeds and feature triple lip seal and coated sprocket spacer. Fits 94-06 FLT, Softail and 94-05 FXD.

**15952**



## 4-Point Ball Bearing for 5 Spd Trans Trap Doors

Four point bearings contact the race in four locations, not just two, as with standard ball bearings. The resulting radial load capacity is 1.5-1.7 times greater than that of a standard ball bearing.

**15752** 1999-on BT



## Colony Chrome Transmission Drain Plug

Replaces OEM 722 magnetic drain plug used on all 1981-92 FLT and FXR models.

**72566**

# S&S 5 Speed Housing



## Electronic Speedo Transmission Sensor

Sending unit fits stock BT 5 speed.

- 29500** Softail 1996-99 (74437-96)
- 29501** All Softail 2000-on and FLT 2004-06 (74430-00D)
- 29510** Dyna 1995-05 (74420-94C)
- 29513** FLT 1997-on (74429-97C)
- 29504** XL 1995-03 (74402-95B)



## S&S 5 Speed Softail Style Trans Case Kit

S&S transmission cases for 1989-99 Evo style Softails are made from 356-T6 aluminum alloy and are CNC machined. Transmission cases are available in your choice of natural aluminum finish or black powdercoat finish. The optional trap door kit features a CNC machined, billet trap door complete with bearings and hardware.

**Natural Black Description**

**5600032 561047** Case assembly w/bearing & seal kit



## S&S Trap Doors 1989-99

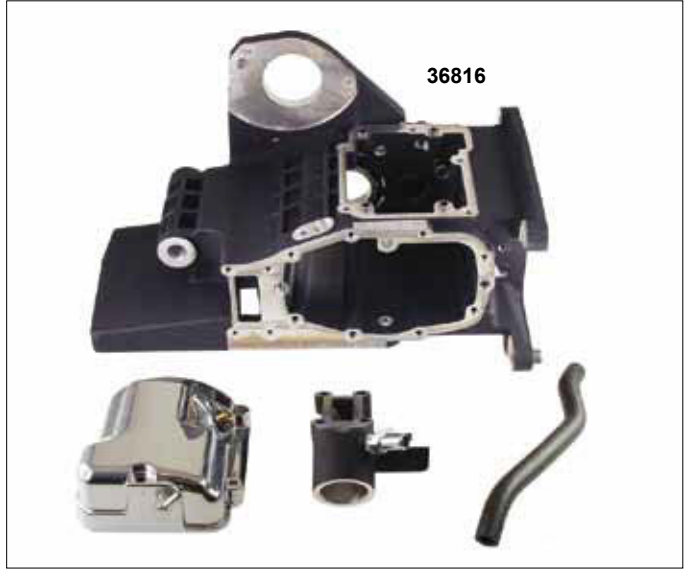
**PCP Description**

- 561025** Trap access door only
- 561027** Trap door w/gaskets, both bearings and hardware

# BT 5 Speed Trans Housing

## Made in USA Gear Boxes

These top quality cases are ready for stock gear parts. Feature stock finish. Case complete with mainshaft seal and bearing installed, countershaft bearing installed, and mount studs & roll pins.

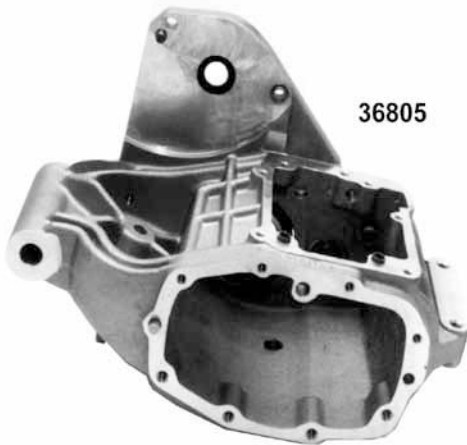


## USA Trans Case Dyna Models

PCP	OEM	Fits
36810	34747-90A	1993-94 (b/wrinkle)
36811	34747-95	1995-96 FXD/WG (b/wrinkle)
36833	34827-99	FXD 1999-2000 (silver, polish top)
36829	34746-99	FXD 2000 (plain)
36830	34827-99	All but FXD 2000 (black)
36832	34747-01B	FXDL/WG/X/XT 2001-05 (black)

## USA Trans Case FLH Models

PCP	OEM	Fits
36816	34829-99	1999-01 FLHR/CI, FLH Touring (black)



## USA Trans Case FXR Models

PCP	OEM	Fits
36805	34730-88	1988 (plain)
36806	34730-89C	1989-94 (plain)



## Transmission Plugs

- C. Transmission Fill Plug/Dipstick fits Evo 5 speed trans.
  - 2865 Chrome 1985-86
  - 9861 Chrome 1987-on
- D. Cap style custom fill plug fits Evo 5 speed trans 1985-86
  - 5393 Chrome Plated
  - 5394 Gold
  - 9401 Brushed aluminum
- J. Chrome allen transmission filler plug for BT 1987-on
  - 9885 (37075-87)



## Chrome Trans & Oil Drain Magnetic Plug

- Fits 2000-on BT with 1/2-13 thread. Replaces 60328-98A.
- 72295 Custom dome head
- 72296 Stock style

# BT 5 Speed



## FXST 5 Speed Assembled Transmission 91-99

All numbers are stock ratio and are machined for electronic speedometer unit. Each transmission includes a 32T final drive pulley.

**PCP Finish**

**58081** Natural with chrome 1991-99



## Primary Chain Drive Systems

Kit includes 82 link Diamond primary chain, shoe adjuster assembly, clutch drum basket with starter ring gear and steel & fiber clutch plates with pressure plate assembly. Front compensator sprocket assembly includes all parts necessary for installation, including sprocket nut. Big Twin 5 speed Softail models require 82 link primary chains.

**82 Links Year**

**53083** 1985-90 Softail



## Trans to Motor Mount Kit TC-88

Fits Twin Cam 88, Dyna and FLT 1999-06.

**9934**



## Chrome Transmission Vent Canister

Accepts 5/16" or 3/8" hose.

**59523**



## Chrome Cable End Covers

These chrome accessories cover the fitting on speedo, tach and clutch cables. Sold each.

### Clutch Cable Cover

**44020** Upper, all 1982-on

**44021** Lower, XL 1986-on

**44022** Lower, FXR 1987-94

**44023** Lower, FXST, Dyna, FLT 1987-on

### Speedo/Tach Cable Cover

**44024** Upper, 12mm cable nuts

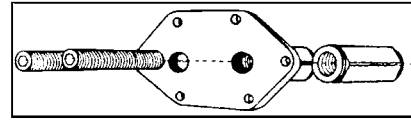
**44026** Lower, all front wheel drive speedo cable only

# Big Twin 5 Speed



## Chrome Hex Dipstick

Fits FXST, FLT 87-99, FXR 87-94 and FXD 91-05.  
59131



## 5-Speed Kicker Installation Tool

Save time when installing 5-speed kicker conversion units, in that the complete trans does not have to be dismantled. Mainshaft & clutch pak can remain in place. Reduces labour time from 6 to 3 hours.

26021

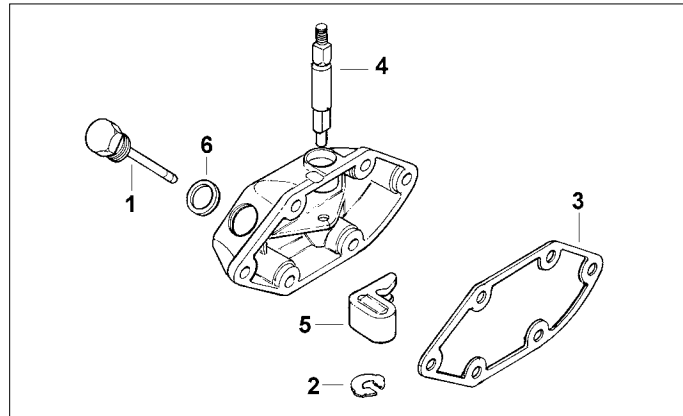


45402

## Chrome Transmission Side/Oil Pump Cover

Fits all Softail models 1986-91. Available in plain or louvered styles. All mounting hardware included.

45402 Plain



45424

## Chrome Ribbed Transmission/Oil Pump Cover

Features ribbed pattern that matches transmission cover. Allows normal check of oil without removal.

PCP Fit

45424 1987-98 Softail (not FLSTS) (66395-92)

## Big Twin Clutch Release 1980-86

Quality release parts for all Big Twin's 1980-86 5 speeds.

- | PCP     | Fits                                  |
|---------|---------------------------------------|
| 1 2865  | Chrome transmission dipstick          |
| 5393    | As above, cap style                   |
| 2 11013 | Retaining ring (11019) (10 pk)        |
| 3 79358 | James cover gasket (36801-79) (10 pk) |
| 4 36127 | Clutch release shaft (37083-80A)      |
| 5 36126 | Clutch release finger (37084-79)      |
| 6 79362 | Dipstick washer (37091-80) (10 pk)    |



## 5-Speed Clutch Release Lever Set 82-86

Chrome plated clutch release lever set for all 5-speeds 1980-86. This kit replaces the 4 separate OEM clutch release arms used since 1980. Replaces the stock release arm and cable bracket with a stronger forged release arm and die cast tranny top cable bracket.

PCP Description

- |       |   |
|-------|---|
| 2409  | Set (37085-80, 37094-82, 37096-83 & 37096-85) |
| 36126 | Release finger (37084-79)                     |
| 11013 | Shaft snap ring (11019) (10 pk)               |
| 36127 | Finger shaft (37083-80A)                      |
| 18709 | Bushing (37102-84)                            |

## Transmission Cover FLT, FLHT 1984-86

Adds a distinguished look to your bike. Covers transmission and oil pump. Mounting hardware included.

3159 1984 & 1985

3161 1986 only



# BT 5-Speed Parts



## 5 Speed Transmission Top Cover

Smooth chrome transmission top cover for all 1982-86 5 speed BT Evo models.

**4340**



## Transmission Top Cover 1987-on

PCP	Description
<b>45540</b>	2007-16 FLHT, FLHX, FLHR, FLTR, FXST-FLST 2006-16 FXD, FXDWG (34469-06A/B)
<b>45539</b>	2001-06 FLHT/C, FLHR, FLTR 2000-06 FXST-FLST (34541-00)
<b>45538</b>	1998-06 FLHT/C, FLHR, FLTR, 1998-99 FXST (34468-98, 34464-98, 34541-00, 34549-01)
<b>45511</b>	1987-99 BT models with 5 speed transmission (except Dyna) (34468-86A, 34464-86A)



## Jims Chrome Billet Transmission Top Cover

Billet aluminum transmission top cover comes with gasket and chrome allen screws. For use on 1998-99 FLH, Softail and 6 speed models. Replaces 34468-98. Will fit 1987-97 FLH and FXST models when using 33902-98 switch and 33320-98 shifter drum.

**31289**



## Chrome Clutch Release Covers

For 5 speed models except where noted. Order screw kits separately.

PCP	Year	Description
<b>45507</b>	1980-86	all (37104-84)
<b>45508</b>	1987-99	FXST, 1987-98 FLHR, FLT, 91-99 Dyna (37105-87A)
<b>45505</b>	1987-99	Billet type, FXST-FLST
<b>45510</b>	1987-94	FXR (37109-87A)
<b>45509</b>	2000-06	FXST-FLST, FXD 99-05, FLT 99-06 (37105-99)
<b>45512</b>	2007-on	FLT, 06-on FXD, 07-on FXST, FLST (37116-06) (6 speed)

## 5-Speed Transmission Chrome Screw Kits, Side Cover

PCP	Year	Type
<b>1768</b>	1980-86	Acorn
<b>2894</b>	1980-86	Cap
<b>8908</b>	1980-86	Allen
<b>8909</b>	1987-on	Allen
<b>8913</b>	1987-06	Cap



## 5-Speed Transmission Chrome Screw Kits

PCP	Model	Type
<b>8905</b>	FX, FL 1980-86 (4-speed)	Allen
<b>8906</b>	FX, XL 1987	Allen
<b>8910</b>	1987	Acorn
<b>8911</b>	1987	Cap
<b>8907</b>	FXR, FLT, FXST 1988-97	Allen
<b>9789</b>	Dyna 1991-on	Allen
<b>9785</b>	Dyna 1991-on	Acorn
<b>8921</b>	BT 1988-on	Acorn
<b>8922</b>	BT 1988-on	Cap
<b>9952</b>	FXST, FLT 1998-on	Allen
<b>9951</b>	FXST, FLT 1998-on	Acorn

# Trans Covers



45811



45810

## BT 5 Speed Chrome Trans Side & Top Covers

Chrome cover set includes chrome allen screws and a chrome allen disstick.

### PCP Application

45810 FLT, FXST, FLST 1987-99

45811 FXR 1987-94

45841 FLT, FXST, FLST 2000-06



## Jims Billet Clutch End Release Cover

Precision machined billet, chrome clutch release end cover is designed to reduce the amount of flex force when using either stock or a high pressure clutch spring. Includes gasket and screws for use on all 5 speed models. May be used with 6 speeds by using different hardware. Fits 1987-06 except FXR with mid controls.

31288



59128

## Chrome BT Transmission Dress Trim

Fully covers the end cover and inner door.

### PCP Application

59128 Softail 00-06

59130 FLT 87-99, FXR 87-94



45025

45026

## BT 5 Spd Chrome End Covers

Offered in smooth and button head style. Outer socket head screw holds cover in place. Fits 1987-on models.

45025 Button head

45026 Smooth

# Transmission Gears



## BT 5 Speed Gear Set

- Stock ratio for 5 speeds with bearings installed in 5th gear
  - 12 piece kit includes shafts
  - Fits 1991-2006 FLST and FXST
- Note: 1994-on gears can be used in earlier models but only in matched sets
- 36196**



## 5 Speed Transmission Close Ratio Gear Set

- Fits 1991-06 FLT, FXST, FLST; 1991-94 FXR and 1991-05 FXD. Close ratio 2.94 low gear set.
- 21944**



**36001**

## XL 4 Speed Clutch Gears

- Includes bushing and 2 needle bearings
- 36001** 37448-84A 17T Clutch gear XL L84-86
- 36002** 37448-87 18T Clutch gear XL 1987-90



## XL Countershaft Drive Gear

- Replaces 35695-87
  - 26T
- 36004** 1987-90

**36190**



**36191**



**36192**



## BT 5 Speed Transmission Gears

- Stock ratio

PCP	Type	Application	OEM
<b>36190</b>	1st Mainshaft	1979-99 FLT, 1986-99 FLST, FXST, 1982-94 FXR, 1991-99 FXD	35025-79B
<b>36191</b>	2nd Mainshaft 3rd Countershaft	1979-93 FLT, 1986-93 FLST, FXST, 1982-93 FXR, 1991-93 FXD	35026-79C
<b>36192</b>	3rd Mainshaft 2nd Countershaft	1979-93 FLT, 1986-93 FLST, FXST, 1982-93 FXR, 1991-93 FXD	35027-79B



## BT 5 Speed Transmission Shafts

PCP	Type	Application	OEM
<b>36194</b>	Mainshaft	1985-89 BT	35042-85
<b>36195</b>	Countershaft	1979-06 FLT, 1986-06 FLST, FXST, 1982-94 FXR, 1991-05 FXD	35632-79

# Jim's 5 Speed

## Jim's BT 5 Speed Transmission Parts 1980-06

Jim's Machining uses aerospace quality steel. These precision parts are made by the same "A Cut Above" team that produces exceptional motor parts, shafts and bushings. Fully interchangeable with OEM parts.



### JIMS Gears

PCP	Jims	Use
31316	35025-79B	1st Gear mainshaft, mate with 35622-79B
31319	35026-79C	2nd Gear mainshaft, 3rd countershaft, mate with 35027-79B
31322	35027-79B	3rd Gear mainshaft, 2nd gear countershaft (use 2 per transmission), mate with 35026-79A
31323	35028-79B	4th Gear mainshaft, mate with 35025-79B
31317	35622-79C	1st Gear countershaft, mate with 35025-79B.
31320	35625-79B	4th Gear countershaft, mate with 35028-79B
31321	35626-79B	5th Gear countershaft, mate with 35028-79, 35029-85A, 35029-91A

### Main Drive Gears 32T

31324	35029-85A	1985-90 Main (5th) drive gear, mate with 35626-79B. Bearing and seal installed, requires a mainshaft with a bearing diameter of 1.000"
31325	35029-91A	1991-06 Main (5th) drive gear, mate with 35626-79B. Bearing and seal installed, requires a mainshaft with a bearing diameter of .9845" (use this gear with mainshaft 35042-91 for the 1990 model year)



### Mainshafts and Countershafts

31327	35042-85	1985-89 Mainshaft, bearing diameter 1.000"
31328	35042-91	1991-06 Mainshaft, bearing diameter .9845" (use this mainshaft with a gear 35029-91A for the 1990 year model)
31329	35632-79	1979-06 Countershaft

Note: For 1990 use shaft #31328 with main drive gear #31325.



### Close Ratio Gear Set (2.94:1) 1980-06

31318	2220	1st Gear close ratio set, makes 1st gear higher for lighter bikes and high performance motors. More MPH in 1st gear. 25T and 16T.
-------	------	---



# Jims 5 Speed

## Jims 5 Speed BT Trans Shift Pawl Assembly

This kit includes plate (35068-79), spring (34087-79), pawl plate (34086-79), shifter shaft (34084-86), spring (34083-79), pin (34082-79), washer (6016) and retaining ring (11016).

**31046** Fits 1979-00 FL, 1982-94 and 1999 FXR, 1991-00 FXD, and 1986-99 FXST



## Complete 5 Speed Big Twin Gear Sets

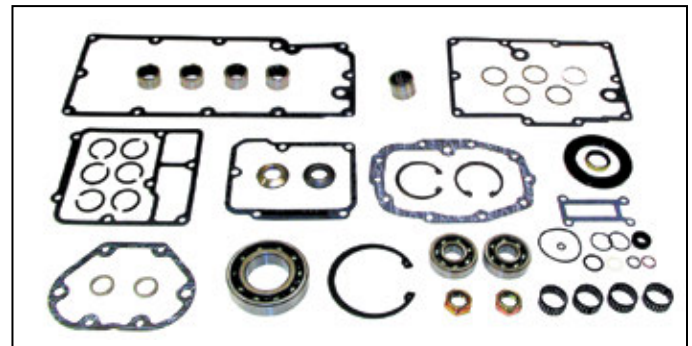
Gear sets for 5 speed transmissions includes all gears and shafts. Available with stock or close ratio first gears. These are the same precision gears used in JIMS complete transmissions and super kits.

Standard Ratio	Close Ratio	Description
<b>31332</b>	<b>31333</b>	1985-89
<b>31334</b>	<b>31335</b>	1990-06



## Jims 5 Speed BT Polished Trap Door 80-06

**31395** (Jims 2347-7)



## Jims "Timesaver" Master Kits

BT 5 speed Jims transmission parts plus James gaskets.

<b>31275</b>	BT L1984-90
<b>31276</b>	BT 1991-98
<b>31277</b>	BT 1999-06

## Jims 5 Speed Mega Nut

The mega nut locks loose pulley nuts using a built-in lock plate. The mega nut can also be secured in several additional places by an easy drilling and tapping operation. Use Jims tool # 94660-37A to tighten nut. Mega nut will work with all belt drive pulleys, H-D or aftermarket, if drilling and tapping is performed. For use on BT 85-06 and XL 1991-on with belt drive.

**31022**



## Jims Early to Late 5 Speed Shifter Upgrade Kit

This is a simple upgrade kit to install on all early BT 5 speed 1980-99 FXST and 1980-2000 FL and Dyna. Make your early model shift smooth and positive with the latest in 5 speed technology. Kit includes a Jims shift drum and lever assembly which has a built-in anti-overshift feature. Kits come with late model pillow block, all necessary hardware, and a case shifter shaft sleeve bushing. For installation of the shifter sleeve, order Jims #1664 tool separately.

**31347**

# Jims 6 Speed

58030



## Jims 6-Speed Transmissions

Jims offers USA made 6 speed transmission with precision cut gears. Using a 6th gear can reduce engine RPM by about 500 RPM's. All gears are standard width for performance and strength, with first gear being close ratio 2.94, and the last four being the same ratio as a stock 5 speed. 6th gear goes to .086:01 overdrive.

**Jim's complete transmissions are on a "Special Order only basis" and are not a stocked item**

## Jims 6-Speed Precision-Cut Gears

JIMS Precision Cut 6 speed transmissions include chromed billet covers, trap door and are shipped complete with bottled transmission oil and instructions. Feature a Factory Direct 6 year or 60,000 miles warranty.

Application	PCP #	1st Gear Ratio	Case	Case Finish	Trap Door
Softail 1990-99*	58028	Close Ratio	Jims	Plain Aluminum	All include Jims Chrome trap door #7075T
Softail 1990-99*	58029	Close Ratio	Jims	Black Wrinkle	
Softail 1990-99*	58030	Close Ratio	Jims	Polished Aluminum	
FXR 1990-94 & 1999	58031	Close Ratio	Delkron	Plain Aluminum	
FXR 1990-94 & 1999	58032	Close Ratio	Delkron	Polished Aluminum	
Softail 2000-06	58033	Close Ratio	H.D.	Plain Aluminum	
Softail 2000-06	58034	Close Ratio	H.D.	Black Wrinkle	

\*Note: Not for models with mid-controls



## Jims Complete Transmission Rebuild Kits

Convenient, time-saving kits come with the necessary gaskets, seals, locks and bearings to completely rebuild a transmission.

### PCP Cruise Drive (Late 6 speed Trans)

- 31278 2007-on FLH
- 31279 2006-on FXD
- 31280 2007-on FXST

### PCP Screamin' Eagle 6 Speed Trans

- 31284 1990-06 FLH
- 31285 1991-05 FXD
- 31286 1990-06 FXST



## Jims Chrome Transmission Shift Lever

Replaces 33715-85 for use all BT 5 speeds, 1980-96 and aftermarket 6 speeds, 4/5 speeds, and 4/5/6 speed transmissions.  
31348



## Chrome Transmission Shift Lever

Replaces 33849-79 for use all BT 1997-06 5 speeds or aftermarket 6 speeds.  
31349 Jims

# Big Twin 6 Speed



## JIMS Cruise Drive Wide Bearing Trap Door Kit

Upgrade kit designed to give the transmission positive shifting and shaft centerline integrity with performance powertrains. Precision machined aluminum holds shaft centerlines within .0005". Features wider, heavy duty bearings with beveled retaining rings to minimize bearing end play. Includes two solid, high strength shift fork shafts that replace the stock hollow shafts. For use on all HD Cruise Drive transmission to 2016

**PCP Finish**  
**31920 Black**



## 6 Speed Transmission Bearing Inner Race

Fits 2008-on FLT, Softail, FXD. (34091-08)

**18016**



## 6 Speed Transmission Gear Set

Imported gear set includes mainshaft, countershaft, all gears, shifter drum, and shifter forks. Trap door, top cover, shifter shaft, seals and gaskets are not included. Fits 6 speed after-market transmissions.

**36233**



## RSD 6 Speed Trans Hydraulic Handle 1991-99

1 1/16" Bore for custom applications. Fits 1" handlebars.

**59553**



## Main Drive Gear Retaining Ring

Replaces 10991 for 2006-on Dyna BT 6-speeds.

**11025 10 pack**

# XL Sprocket Covers



45526



3069

## Sportster 1981-90

Die-cast OEM type quality covers.

PCP	Item
45525	Polished 1981-90 (34911-81)
45526	Chrome 1981-90 (34911-81)
3069	Polish 1986-90 (34911-81A)
3068	Chrome 1986-90 (34911-81A)
45547	Chrome 1986-90 Belt Drive
10908	Pivot stud 1980-90 (42441-80)
27013	Bracket, right side 1983-90 (34909-83)



## Chrome XL Transmission Sprocket Cover

These chrome covers fit XL 2004-on models

64281	Topline (34932-04)
45496	Preston as above



21697



45530

## Sportster 1991-on Belt/Chain

Fits STD, Hugger and 1200. Not C or S.

PCP	Item
21696	Polished cover 2004-on (34932-04)
21697	Chrome cover 2004-on (34932-04)
45530	Polished cover 1991-03 (34911-91)
45531	Chrome cover 1991-03 (34911-91)
10909	Pivot stud 1991-03 (42441-90)
27014	Bracket, right side 1991-03 (34909-90)



## Kickstarter Conversion Kit XL 1991-03

Includes sprocket cover, chrome kick starter arm, rubber pedal, kick shaft and gear set.

90147

## XL Chrome Cover Screws

Acorn	Allen	
5502	9750	1986-03 883/1100
	72226	2004-on XL (4 pk)



45415



45427

## XL Chrome Sprocket Cover Trim 1986-03

These covers fit over the kicker cover

45415	1986-90
45427	1991-03 (34939-98) STD, Hugger, 1200



## Countershaft Washers for XL 1986-90

Washers are sold in packs of five for each size or as a set of 1 of each size.

PCP	Item
11650	Set of 6.
11644	.030 (35865-86)
11645	.035 (35864-86)
11646	.040 (35863-86)
11647	.045 (35862-86)
11648	.050 (35861-86)
11649	.055 (35860-86)

# Andrews XL 5 Speed

## XL Gears 5 Speed EVO 1991-03

The 5 speed XL gear box is a great way to travel especially if you're used to only 4 speeds. For high performance applications, our 2.61 close ratio first gears will be a welcome option. In addition to close ratio first gears, Andrews Products makes replacement parts for 2nd, 3rd, 4th, 5th gears and both transmission shafts.

As with the close 1st gears, all 5 speed gears are made from high nickel alloy, heat treated and shot peened to give maximum durability and strength. Also, where applicable, lead-in ramps have been machined into most gears to improve shifting and reduce wear on drive dogs and drive slots.



### 2.61 Close Ratio 1st Gear Set

2.61 1st Gears provide true close ratio shifting into 2nd. Plus 7 mph of usable 1st gear. (20T and 30T) (2 pieces)  
299110



### Stock 2nd and 3rd Gears

High nickel steel parts with lead-in ramps for maximum strength. Main drive gear also has lead-in ramps for quick positive shifting. Drive edges shot peened for super wear resistance.

299102 24T 2nd Main / 3rd counter (35771-89)  
299103 28T 3rd Main / 2nd counter (35772-89)



### Stock 4th Gears

Made from high nickel steel material with shot peened surfaces. Main gear also has lead-in ramps.

299104 30T 4th Main gear (35773-89)  
299144 21T 4th Counter gear (35775-89)



### Stock Main Drive Gears

Made from high nickel gear steel for maximum strength. Main drive gear also has lead-in ramps for quick positive shifting.

299105 33T Main drive gear (35034-89)  
299155 19T Counter drive gear (35633-89)



### Transmission Shafts

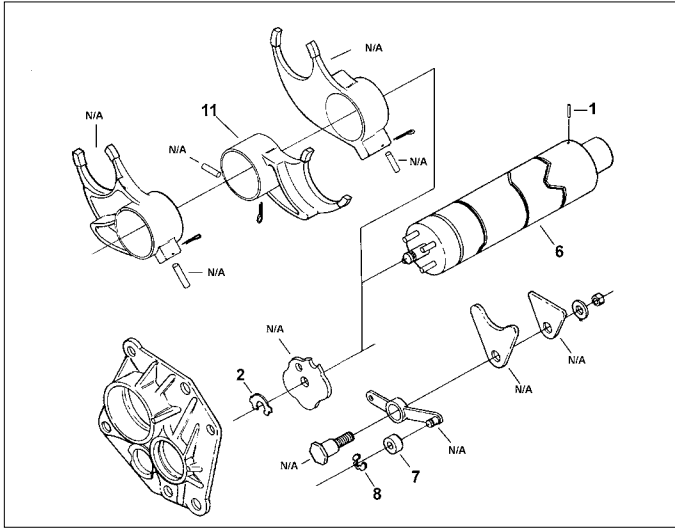
Replacement transmission shafts are made from high nickel steel with aircraft quality heat treatments.

299180 Mainshaft (35640-89)  
299170 Countershaft (35641-89)

Internal transmission ratios are listed below.

Gear	Close First	% Change	Stock	%Change
1st	2.605	22%	2.779	27%
2nd	2.026	27%	2.026	27%
3rd	1.489	18%	1.489	18%
4th	1.216	18%	1.216	18%
5th	1.000		1.000	

# XL 5 Speed



## Sportster 5 Speed Shifter 1991-on

#	PCP	OEM	Description
1	10103	601	Roll pin (10 pk)
2	11013	11019	Retaining ring (10 pk)
6	N/A	33634-91	Shifter drum assembly
7	16053	33652-90	Detent roller (10 pk)
8	11107	33653-90	Retaining ring (10 pk)
11	N/A	34142-89C	Shifter fork, first & second
14	24056	34486-90	Detent arm screw
	15736	35030-89	Bearing



## Andrews 5 Speed XL Transmission Gear Set

Set includes 2.68 first, second, third, fourth, fifth gears for both mainshaft and countershaft. Fits 5 speed XL 1991-03. 299900



## XL Access Door 1991-on

#	PCP	OEM	Description
1	15708	8998	Bearing 1991-99
2	18713	9187	Bushing
3	18705	16573-83	Insert, access door (5 pk)
5	11108	35021-89	Retaining ring 1994-98
6	15736	35030-89	Bearing
7	11068	35038-89A	Retaining ring

## XL 5 Speed Transmission Gears 1991-on

#	PCP	OEM	Description
1	18000	6003	Thrust washer 91-97(5 pk)
2	15600	8876A	Bearing
3	15605	8977	Bearing, closed end
4	15707	8996A	Ball bearing
5	11031	11067	Retaining ring (10 pk)
6	11040	11161	Retaining ring (ea)
7	14528	11165	Quad seal (10 pk)
	79039	11165	James quad seal (25 pk)
8	14098	12030	Oil seal 1991-on (5pk)
	79069	12030	James oil seal (5 pk)
9	14021	12050	Oil seal 1991-94 (ea)
	79080	12050	James oil seal (ea) 1991-94
	14076	12067A	Oil seal 1995-on (5 pack)
	79508	12067A	as above James (each)
10	11538	33334-85	Spacer 1991-94
	18006	33344-94	As above 1995-*
11	45530	34911-91A	Sprocket cover 1991-03
12	11089	35020-89	Retainer, countershaft (5 pk)
13	18004	35022-89A	Spacer
14	N/A	35034-89A	Gear assembly w/ #8 & 15, fifth mainshaft 1991-95
15	15626	35051-89A	Needle Bearing
16	18005	35063-89	Spacer (5 pk)
17	12602	35211-91A	Sprocket nut
19	299180	35640-89	Mainshaft 91-05, Andrews
	36012	35640-89	Mainshaft 91-05, import
20	36204	35641-89	Countershaft, T/L
	299170		Countershaft, Andrews
21	N/A	35762-89A	Gear, first mainshaft
23	N/A	35771-94A	Gear, second mainshaft, third countershaft 1991-95
24	N/A	35772-89A	Gear, third mainshaft, second countershaft 1991-95
27	12603	37495-91	Nut, mainshaft 1991-on
28	5957		21T Sprocket STD Hugger 91-92
29	20501	37870-91	Spring washer 1991-on
30	N/A	40285-91B	27T Sprocket (belt) 883 models
31	13741	40251-92A	Retention plate

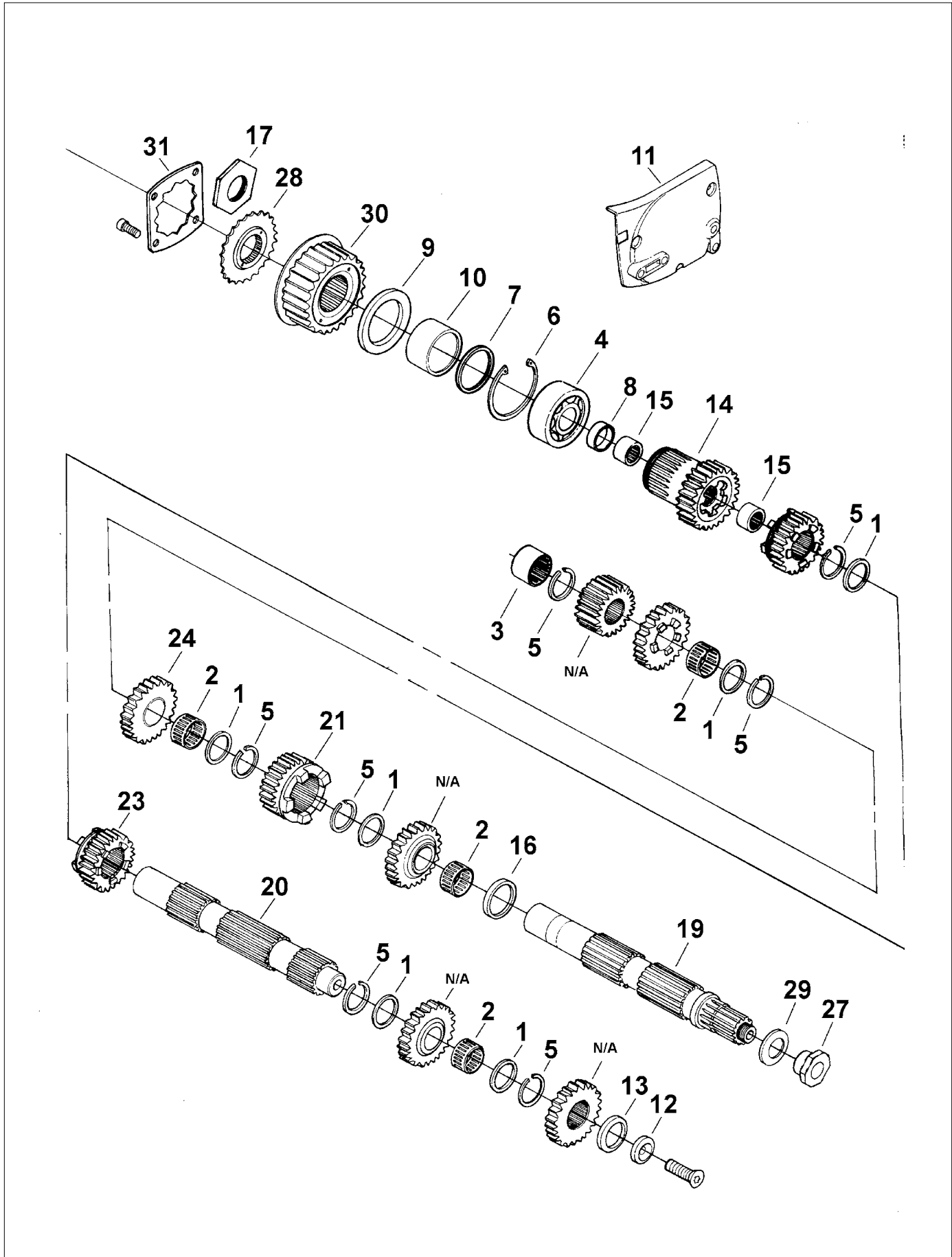
Note: The gears listed above are not "High Contact" gears



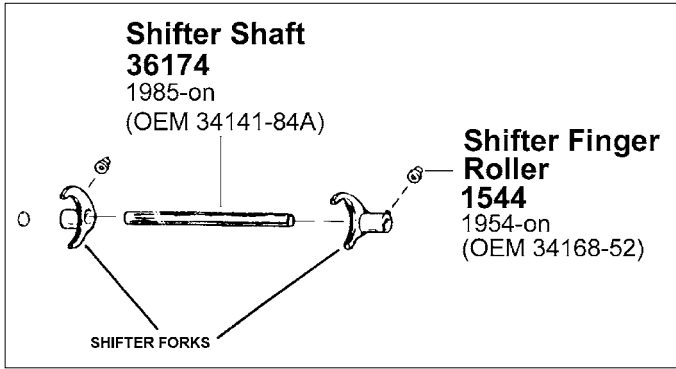
## James Transmission Gaskets

PCP	OEM	Description	Fitment	U/M
79843	12074-XL	Sprocket oil seal kit	XL 2008-on	Kit

# XL 5 Speed



# XL 4 Speed Shifter Parts



## XL Shift Forks 1952-90 4 Speeds

One piece forged, heat treated and precision machined shift forks are available in steel or brass with standard or offset dimensions.

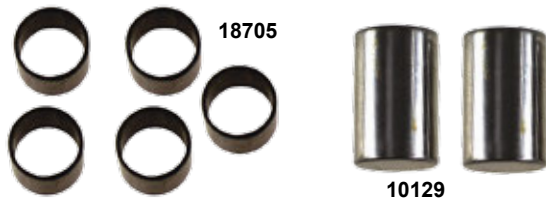
Brass	Steel	Size	OEM
<b>37120</b>	<b>2069</b>	STD	34291-52B
	<b>37127</b>	+ .005	
	<b>37128</b>	- .005	
<b>37121</b>	<b>37131</b>	+ .010	34297-84
<b>37122</b>	<b>37132</b>	- .010	34296-84
<b>37123</b>	<b>2164</b>	+ .020	34292-72
<b>37124</b>	<b>2165</b>	- .020	34293-72
<b>37125</b>		+ .030	
<b>37126</b>		- .030	
<b>36174</b>	Shifter shaft 1985-01 (34141-84A)		
<b>1544</b>	Shifter finger roller 1954-on (34168-52)		



## XL Gear Selector Shafts 1986-on

PCP # 36146 and 36147 are splined on shift lever end.

PCP	OEM	Application
<b>36146</b>	34628-86	1986-90
<b>36147</b>	34015-91	1991-02
<b>36173</b>	34014-06	2006-on 5 speed
<b>14010</b>	12010	1986-on Oil seal
<b>18570</b>	40520-63	1979-on Bushing
<b>79363</b>	37101-84	1984-on Oil seal
<b>18588</b>	40574-06	2006-on Bushings



## XLH-XLCH Transmission Trap Door Parts

PCP	Description
<b>18705</b>	1986-on Insert, stock (16573-83) (5 pk)
<b>10129</b>	1957-on Dowel (pair) (24578-57)



## Complete XLH, XLCH 4 Speed Trans Gear Unit

Gear assembly unit includes all gears, main and counter shaft, shift forks and shaft assembled to trap door as well as shift selector shaft. Right side case races, rollers, shims, and bearing-must be ordered separately for the appropriate year. **Note:** Main and countershaft end play and trap door alignment with case must be established and adjusted before final assembly.

PCP	Years
<b>36913</b>	1986
<b>36922</b>	1987-90



## XL Shifter Pawl Assembly 1972-90

Includes shifter pawl carrier, shifter pawls, pawl springs, spacer and retaining ring.

**36150**



## Transmission Shifter Cam Plate

Fits 1977-90 XL. Replaces 34012-75B.

**36023**

## Jims Trans Sprocket Nut

**31017** XL 91-on (35211-91)

